

Phil,

This is the information we talked about concerning my 1917 Cadillac. The attached drawing is from the owners/shop manual.

I've added dimensions to help identify the correct cable and casing (or build it). I need both the cable and the casing. Lengths between 6' 3" and 7' should work.

I have the 45 degree swivel that attaches to the Warner speedometer and a 3/4" - 20 cable casing end

Give me a call after you've had a chance to look at the drawing.

Thanks for you help.

The flexible shaft to the speedometer is driven right hand front wheel through the driver "A," Fig. 52, gears "C" and "E."

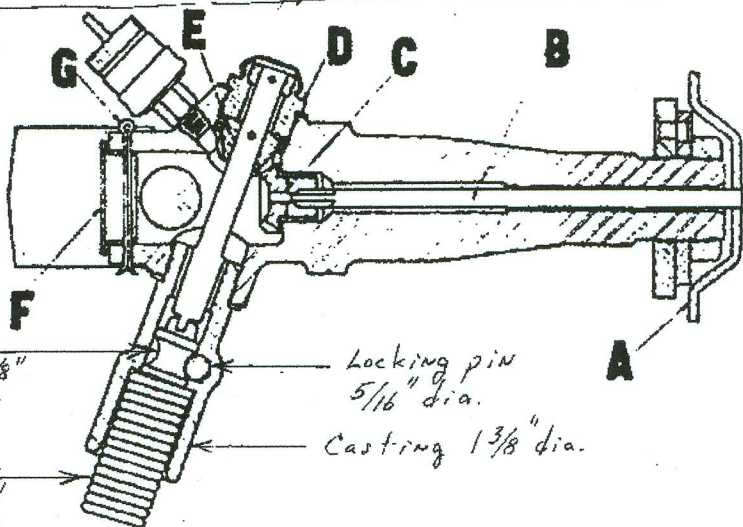
*1917 Cadillac Type 55 Phaeton*

*Cable length  
6'3" to 7'.*

*Female blade  
slot at cable  
end ~ 7/8" wide.*

*Cable end is ~ 7/8"  
long and 5/8" dia.*

*Cable casing  
is 7/8" dia. and  
goes into the  
casing ~ 1/4".*



**Fig. 52. Front Right Spindle and Speedometer Driving Gears.**

*At the Warner speedometer head the cable end is a male blade 7/8" wide. The cable casing end is 3/4"-20.*

To ren  
the spind

Remove  
wheel.

Pull ou

Unscre

The ge  
to which  
out with

Remove

Remove

The ge  
moved.

The pa  
in the rev

**ALIGNMENT OF FRONT WHI**