



Model "M" Price \$125.00

Exclusive Features—Speed Dial 4½". Indicates to 60 miles per hour. Season Odometer registers to 100,000 miles. Trip Odometer registers to 1,000 miles. Trip Odometer resets with one turn. Interior Electric Lighting Attachment for both Clock and Speedometer. Clock 3⅞", of the Celebrated Chelsea Manufacture.

Model "N" Price \$125.00

Same as Model "M" but with Speed Dial indicating to 100 miles per hour.



Warner De Luxe

Model "O" Price \$145.00

Exclusive Features—Speed Dial 4½". Indicates to 60 miles per hour. Season Odometer registers to 100,000 miles. Trip Odometer registers to 1,000 miles. Trip Odometer resets with one turn. Interior Electric Lighting Attachment for both Clock and Speedometer. Clock 4½", of the celebrated Chelsea Manufacture.

Model "P" Price \$145.00

Same as Model "O" but with Speed Dial indicating to 100 miles per hour.



Model "K" Price \$75.00

Exclusive Features—Speed Dial 4½". Indicates to 60 miles per hour. Season Odometer registers to 100,000 miles. Trip Odometer registers to 1,000 miles. Trip Odometer resets with one turn. Interior Electric Lighting Attachment.

Model "L" Price \$85.00

Same as Model "K" but with Speed Dial indicating to 100 miles per hour.

WARNER A U T O M E T E R



Price List

Season 1910
FILE COPY
Warner Instrument Co.
PATENT 1902
1902 Broadway
NEW YORK

**WARNER INSTRUMENT
C O M P A N Y
FACTORY & MAIN OFFICE
B E L O I T , W I S .**



Warner Auto Meter



The Aristocrat of Speed Indicators

Every substantial improvement in Speed Indicators since they first appeared on the market has been made by the Auto-Meter. It introduced the Magnetic Principle. It was first to combine the speed and distance features, first to use the clock, first to provide a light, first to offer universal attaching devices. Every improvement has been copied as soon as it appeared.

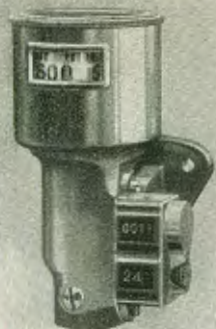
For the season of 1910 we are offering an odometer that will record 100,000 miles on the season dial and 10,000 miles on the trip. This has already been copied to some extent.

But in its design and manufacture it is still unique, supreme and unapproachable, the Aristocrat of Speed Indicators.

BRANCH OFFICES

BUFFALO	722 Main Street	LOS ANGELES	1212 South Main Street
BOSTON	925 Boylston Street	NEW YORK	1902 Broadway
CLEVELAND	2062 Euclid Avenue	PHILADELPHIA	302 N. Broad Street
CHICAGO	2420 Michigan Avenue	PITTSBURG	3432 Forbes Street
CINCINNATI	122 East Seventh Street	ST. LOUIS	3923 Olive Street
DETROIT	870 Woodward Avenue	SEATTLE	917 East Pike Street
INDIANAPOLIS	330½ N. Illinois Street	SAN FRANCISCO	36-38 Van Ness Ave.
	ATLANTA, -		116 Edgewood Ave.

TELLS TIME, SPEED AND DISTANCE DAY AND NIGHT



Model "F" Price \$50.00

Exclusive Features—Speed Dial indicates to 60 miles per hour. Season Odometer registers to 10,000 miles. Trip Odometer registers to 100 miles. Odometer is of the well known Veeder Manufacture.

Model "G" Price \$60.00

Same as Model "F" but with Speed Dial indicating to 100 miles per hour.



Model "H" Price \$90.00

Exclusive Features—Speed Dial indicates to 60 miles per hour. Season Odometer registers to 10,000 miles. Trip Odometer registers to 100 miles. Odometer of the well known Veeder Manufacture. Outside Electric Lighting Attachment. Clock 3½", of the Celebrated Chelsea Manufacture.

Model "I" Price \$90.00

Same as Model "H" but with Speed Dial indicating to 100 miles per hour.