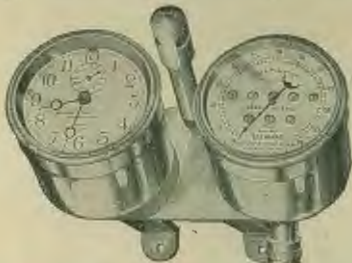


Model 35. Combination of Model 11, 60-mile, four-inch dial, enclosed 10,000-mile season odometer and automatic resetting trip register and eight-day, seven-jewel Stewart clock, stem wind and set, mounted on brass base, equipped with electric light. Price, \$50.00

Model 18. Four-inch dial, 90-mile speedometer, 100,000-mile season odometer, automatic resetting trip register, eight-day Seth Thomas clock (keyless), electric light. Price, \$110.00

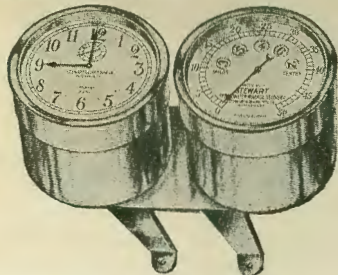
Model 29. Four-inch, Model 27, 75-mile speedometer, sapphire bearings, enclosed 100,000-mile season odometer and automatic resetting trip register, combined with an eight-day Seth Thomas keyless clock and electric light, mounted on handsome bracket to be attached to dash. Price, \$75.00

Model 10. Same as Model 29, except speedometer has 60-mile dial, odometer 10,000 miles. Price, \$60.00



Model 34. Combination of Model 26 speedometer, 60-mile, three-inch dial, enclosed 10,000-mile season odometer, and automatic resetting trip register, eight-day, seven-jewel Stewart clock, stem wind, stem set, mounted on brass base, equipped with electric light. Price, \$40.00

Model 28. Three-inch, 60-mile speedometer, Model 26, combined with a three-inch Seth Thomas eight-day keyless clock, mounted on handsome bracket, equipped with electric light. Price, \$55.00



Model 33. Combination of Model 24 speedometer, 50-mile, two and one-half-inch dial, enclosed 10,000-mile season odometer and eight-day Stewart clock, stem wind and stem set, mounted on brass base. Price, \$25.00

1910 Stewart 1910 Multipolar Speedometer

Guaranteed Absolutely for Five Years

OUR efforts have been directed to the bettering of our product. Our goal being constantly to make the best possible speedometer.

A few reasons why the Stewart Multipolar Speedometer is superior to all other types

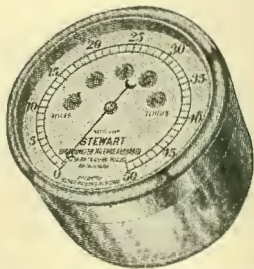
Beauty of design.
Simplicity of construction.
Highly sensitive to changes in speed.
Accurate over the entire scale.
Longest scale on any speedometer.
Pointer absolutely steady at all speeds.
Only two moving parts, having no connection with each other.
Accurate calibration easily accomplished and permanently retained.
Evenness of torque.
Lighter indicating element with absence of inertia.
Jewel bearings larger and costlier than used in any other speedometer.
More magnet area.
Rotor operates at very low speed and has no mechanical function except to revolve.
Equipment of shaft, clamp, etc., not equaled in any other speedometer.
Unique ball bearing (patented) Swivel Joint eliminates bends in the shaft.

The only speedometer guaranteed for five years.
Made by the largest and most responsible speedometer manufacturers in the world, backed by a manufacturing experience of twenty years.

FOR SALE BY

The Beckley-Ralston Co.

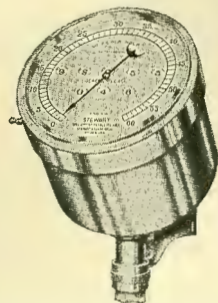
80-82-84 Michigan Ave., Chicago, U.S.A.



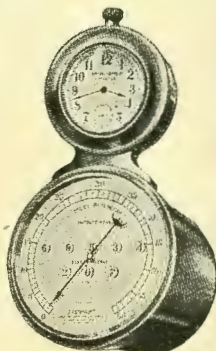
Model 23. Two and one-half-inch dial, 30-mile-speedometer, 10,000-mile season odometer, for electric automobile and commercial trucks. Price \$15.00
 Model 31. Two and one-half-inch dial, for motor boats. Indicates speed of engine; maximum, 1,200 revolutions. Price, \$12.00



Model 19. Four-inch dial, 90-mile speedometer, 100,000-mile season odometer, automatic resetting trip register. Price, \$75.00



Model 28. Three-inch dial, 60-mile speedometer, 10,000-mile season odometer, automatic resetting trip register. Price, \$20.00
 Model 24. Three-inch dial, 60-mile speedometer, enclosed 10,000-mile season odometer. Price, \$15.00
 Model 30. Three-inch, odometer only, 100,000-mile season register, automatic resetting trip register 100 miles. Price, \$15.00



Model 32. Three-inch dial, 60-mile speedometer, 10,000-mile season odometer, automatic resetting trip register and watch. Price, \$25.00
 Model 26. Three-inch, 50-mile speedometer, with enclosed 10,000-mile season odometer, equipped with a guaranteed watch. Price, \$20.00



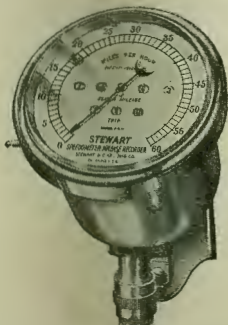
Model 27. Four-inch dial, 75-mile speedometer, 100,000-mile season odometer, automatic resetting trip register. Price, \$40.00



Model 16. Four-inch dial, 90-mile speedometer, 100,000-mile season odometer, automatic resetting trip register, eight-day Seth Thomas clock (keyless), electric light, mounted on brass standard. Price, \$125.00



Model 21. Motor cycle speedometer, two and one-half-inch dial, 60-mile, 10,000-mile season odometer. Price, \$12.00
 Model 22. Same as above with 90-mile dial. Price, \$15.00



Model 11. Four-inch dial, 60-mile speedometer, 10,000-mile season odometer, automatic resetting trip register. Price, \$25.00

Model 14. Four inch-dial, 90-mile speedometer, 100,000-mile season odometer, automatic resetting trip register, eight-day watch, mounted on brass standard. Price, \$90.00