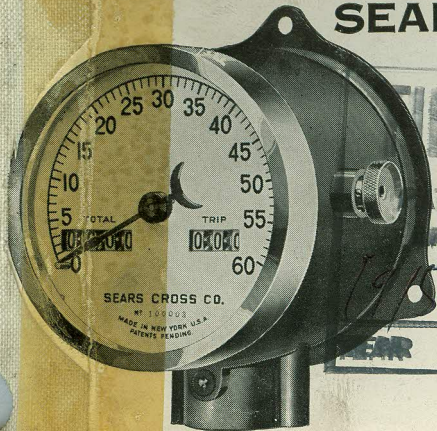


THE
"ABSOLUTELY ACCURATE"
SEARS-CROSS

Y 1/2



CENTRIFUGAL SPEEDINDICATOR

Yes Sir-

There will be more CENTRIFUGAL
SPEEDINDICATORS used in 1915
than all other types. : : : : : : :

Unaffected by Temperature, Altitude
or Vibration.

General Sales Office:
650 Woodward Ave., Detroit, Mich.

CHICAGO OFFICE
23rd and Ind. Avenues

FACTORY:—Bush Terminal
Brooklyn, New York

SERVICE STATIONS IN ALL PRINCIPAL CITIES