

Johns-Manville Branches and Service Stations

Akron, O., 717 Second Nat. Bank Building
 Albany, N. Y., 260 Central Ave.
 Atlanta, Ga., 31A So. Broad St.
 Birmingham, Ala., 2028 Ave. B
 Boston, Mass., 55, 57, 59 and 61 High St. and 74 Brookline Ave.
 Buffalo, N. Y., 206-208 Main St.
 Chicago, Ill., Michigan Ave. and 18th St.
 Cincinnati, O., 654-656 Main St.
 Cleveland, O., 813-815 Superior Ave., N. W.
 Columbus, O., 45 West Long St.
 Dallas, Texas, 503 Sumpter Building
 Dayton, O., 259 Fourth Street Arcade
 Denver, Col., 534 Denver Gas & Elec. Light Building
 Detroit, Mich., 72 Jefferson Ave. and 872 Woodward Ave.
 Duluth, Minn., 327 West First St.
 Galveston, Texas, 2209-11 Strand St.
 Houghton, Mich., 96 Sheldon St.
 Houston, Texas, 304 Texas Co. Building
 Indianapolis, Ind., 408-410 No. Capitol Ave.
 Kansas City, Mo., 1514 Grand Ave.
 Los Angeles, Cal., 1232 So. Grand Ave.
 Louisville, Ky., 659-661 So. Fourth Ave.
 Memphis, Tenn., 274 Monroe St.
 Milwaukee, Wis., 201-231 Clybourn St. and 96 Second St.
 Minneapolis, Minn., 18 South Eighth St.
 Newark, N. J., 239 Halsey St.
 New Orleans, La., Cor. Magazine & Gravier Sts.
 New York, N. Y., Madison Ave. & 41st St. and 1930 Broadway
 Omaha, Neb., 1003 Farnam St.
 Philadelphia, Pa. 21, 23 & 25 N. Second St. and 510-512 N. Broad St.
 Pittsburgh, Pa., 100-102 Wood St. and 416 North Craig St.
 Portland, Oregon, 69 Broadway
 Rochester, N. Y., 521 Chamber of Commerce
 San Francisco, Cal., Second & Howard Sts. and 1247-9 Van Ness A. ve.
 Salt Lake City, Utah, 408-9 Dooly Bk.
 Seattle, Wash., 1020 First Ave., South
 St. Louis, Mo., 501-505 N. Third St. and 3120 Locust St.
 St. Paul, Minn., 205 Ryan Building
 Syracuse, N. Y., 344 Gurney Building
 Toledo, O., 213 Water St.
 Washington, D. C., Builders & Manufacturers Building
 Wilkes-Barre, Pa., Coal Exchange Building
 Youngstown, O., 502 Stambaugh Building

The Canadian H. W. Johns-Manville Co., Limited

Montreal, Que., 450-452 St. James St.
 Toronto, Ont., 19 Front St.—East
 Vancouver, B. C., 511 Winch Building
 Winnipeg, Man., 92 Arthur St.

One Firm One Service One Guarantee
 Back of every J-M Accessory

J-M AUTOMOBILE AND MOTOR BOAT SUPPLIES





J-M Service

EVERY J-M Automobile Accessory is a proven product backed by the resources of a nation-wide organization with over half a century's reputation for quality and honorable dealing.

Our interest in a J-M Accessory does not stop with a sale. Johns-Manville Service Stations are located in every important city in North America. They carry a complete line of parts and fittings of all J-M Accessories and are mechanically equipped to render the highest calibre of repair service. Therefore, should any J-M Accessory require adjustment or a part become accidentally damaged and need repair or replacement, you are assured of efficient and satisfactory service without the usual delay and inconvenience.

This country-wide service makes the J-M Guarantee of Satisfaction an actuality wherever you may be.

Johns-Manville Speedometer



The Johns-Manville Speedometer is actuated by a three-weight centrifugal governor, so perfectly balanced as to render it unailing in accuracy and positive in reliability under all conditions of service.

It has no springs nor sensitive magnetics to get out of order, nor is it subject to the influence of stray electric currents, temperature or altitude.

It is constant and accurate at all speeds, has few working parts and is in every respect a thoroughly dependable instrument.

The speed scale is a sweeping arc with evenly-spaced graduations, each five-mile point being marked in large easily read figures.

It is fitted with Johns-Manville self-enclosed Odometer, large, plain figures registering trip mileage up to 100 and repeat, with tenths of miles shown in red figures, and total season's mileage up to 100,000, and repeat.

The trip odometer may be reset to any figure by simply pushing and revolving reset wheel on the side of the instrument.

A particularly noticeable feature of the Johns-Manville speedometer's performance is its accuracy in registering low speeds.

Model 101—201—1001—1009

Model 101—3¼-in. 60-mile Speed Scale, white dial.....	\$25.00
“ 201—3¼-in. 80-mile “ “ “ “.....	30.00
“ 1001—4-in. 60-mile “ “ “ “.....	50.00
“ 1009—4-in. 80-mile “ “ “ “.....	60.00

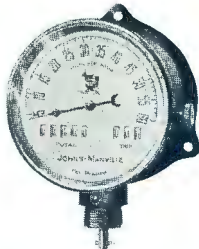
Standard finish, black enamel with nickel trimmings—Brass trimmings optional.

Prices include all necessary fittings.

Fittings can be attached to either right or left wheel of car.

Instrument furnished for cowl or dash mounting.

Johns-Manville Speedometer for Ford Cars



Johns-Manville Speedometer, Model 2001-D, was designed and constructed to the specifications of the Engineering Department of the Ford Motor Company. It was used by the Ford Motor Company as standard equipment on Ford cars up to the time speedometers were discontinued as part of the Ford standard equipment.

It is the same in all essentials as the standard Johns-Manville Speedometer, but owing to its special fittings can be used only on Ford Cars, on which it may be easily and quickly installed.

It has a 3¼-in. white dial, 60 miles speed scale, with large, easily read figures. Due to the perfect balance of the governing mechanism there is no wavering or faltering of the indicator hand—it points surely and accurately to the exact speed.

Each instrument is fitted with a Johns-Manville self-enclosed odometer, registering 100,000 miles, and repeat, for the season and 100 miles and repeat for the trip. Tenth miles, on trip are shown in red figures. Equipped with regulation Johns-Manville reset wheel.

Finished in black enamel with brass trimmings.

Price including all fittings and instructions for attaching.....\$12.00

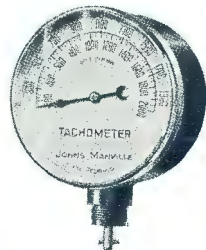
Johns-Manville Tachometer

Furnished with 3¼-in. dials reading 500, 1000 and 2000 R.P.M. and with 4-in. dials reading 2000 and 4000 R.P.M.

Model	Description	Price
1	3¼-in.—200 to 2000 R.P.M.....	\$30.00
2	3¼-in.—100 to 1000 R.P.M.....	30.00
4	3¼-in.— 50 to 500 R.P.M.....	30.00
6	4-in. —200 to 2000 R.P.M.....	40.00
7	4-in. —400 to 4000 R.P.M.....	40.00

Above prices include upper and lower attaching bracket—swivel spiral gear section, gears, and casing and cable up to 6 feet.

Extra Shafting. . \$1.00 per ft.

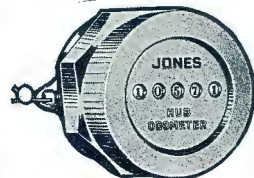


Jones Hub Odometer

The simplest of all mileage recording devices. No flexible shaft, brackets, gears or other fittings required. Special Jones Odometer movement, recording 100,000 cumulative mileage (both forward and backward travel) is encased in brass cup, absolutely grease proof, fitted into a casting similar to hub cap.

Can be sealed if desired. For all standard trucks.

In ordering specify name of vehicle; year and model number; wheel diameter; also, if possible, actual wheel travel through one revolution. Furnished in brass or malleable iron. Price, \$20.00



Johns-Manville Shock Absorber

"The Spring's the Thing"



Showing Construction

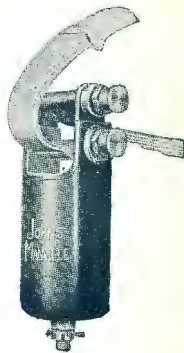
A unique telescopic volute spring of highest quality Vanadium steel serves as an effective cushion for the most severe vibrations.

The shell is made of drawn steel, without joint or seam, and is handsomely finished in fine black Japan. Other parts are polished and nickel-plated.

Easy to install and adjust and can be regulated to a nicety.

No. 2—Intermediate, suitable for all springs up to 2¼ in. wide, inclusive, per pair.....\$15.00

Special Spring Perches are furnished for Ford Cars.



Usual Method of Attaching



Method of Attaching to Ford Car

Long Horn

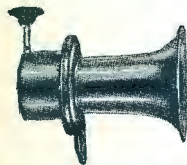
"Leaves Nothing to Chance"

A never-failing, hand-actuated, mechanically-operated warning signal, producing a volume of sound that may be varied at the will of the operator from a softly modulated rumble to an imperative get-out-of-the-way signal. Constructed of the finest materials by expert mechanics. Machine-cut, hardened gears, ball and roller bearings.

Model J. A horn that has good looks as well as good quality. Finished in black-and-nickel; black-and-brass; and all-black. Attaches to side of seat or on fore door. Total length 9 in. Length Bell 6¼ in. Diameter Bell 5½ in. Price \$5.00.



Model J



Model S

Model S. The aristocrat of the mechanical horn world. Finished in black-and-nickel; black-and-brass; all-black; all-nickel; and all-brass. Total length 9½ in. Length Bell 6¼ in. Diameter Bell 6 in. Price, \$12.50.

Model D. Mechanically operated cable horn, which permits attachment anywhere, under the hood or on the dash. Finished in black-and-nickel; black-and-brass; and all-black. Total length 9 in. Length Bell 6¼ in. Diameter Bell 5½ in. Price, \$10.00.



Model D



Model JM

Model JM. Hand horn. For motor-cycles. Finished in black-and-nickel or all-black. Total length $4\frac{3}{4}$ in. Length Bell 2 in. Diameter Bell $4\frac{1}{2}$ in. Price, \$5.00.

Model 12. Electric motor driven. Absolutely unequalled in tone. Clean cut and handsome in appearance. Outwears any horn on the market. Projector in one piece; no seams or solder. Roller contact and ball bearings minimize friction. Lowest current consumption, therefore most economical horn of its size. Total length 10 in. Length of Bell $6\frac{1}{4}$ in. Diameter of Bell $5\frac{1}{2}$ in. Finished in black-and-nickel; black-and-brass; and all-black. Complete with push button and cord. Price, \$10.00.



Model 12

J-M Electric Vibrator Horn

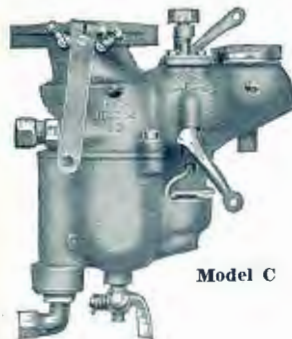


Model C

Model C. Electric vibrator horn. The only vibrator horn at any price using a helical armature spring, thereby eliminating armature spring breakages so common in vibrator horns of other construction, and with an adjustable double contact spring permitting the user to take up wear and increase the serviceability. Finished in all-black only; flare or torpedo type bell; six or twelve volts; complete with push button and cord. Sizes: Torpedo Bell Model, total length $9\frac{1}{2}$ in. Length of Bell $6\frac{1}{2}$ in. Diameter of Bell $4\frac{1}{2}$ in. Flare Bell Model, total length, $8\frac{3}{4}$ in. Length of Bell $5\frac{3}{8}$ in. Diameter of Bell $4\frac{3}{4}$ in. Price, either model, \$3.50.

Carter Multiple Jet Carburetor

Increased power, speed and flexibility with lower gasoline bills guaranteed



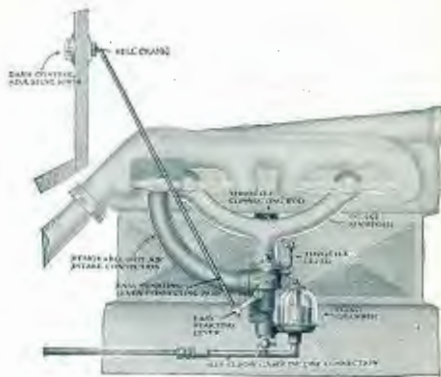
Model C

The Carter Multiple-Jet Principle differs from all others in that its fuel supply is automatically governed by the varying action of the motor and not by any mechanical device. The large number of jets gives wonderful flexibility and economy. Their small size insures perfect vaporization under all conditions. Made in two models.

Model "C." Once adjusted is automatic in action. Manipulation of air valve with dash or steering post control offsets temperature, altitude and atmospheric variations without opening the hood. Equipped with "sure-shot" easy starting device which enables starting on quarter turns in coldest weather. Prices, including post or dash control:—

No. C0—throttle size	1 in.....	\$22.50
No. C1—throttle size	$1\frac{1}{4}$ in.....	27.50
No. C2—throttle size	$1\frac{1}{2}$ in.....	32.50
No. C3—throttle size	$1\frac{3}{4}$ in.....	37.50
No. C4—throttle size	2 in.....	47.50

Carter Multiple Jet Carburetor



Model "F" Ford Assembly

Designed to meet the requirements of Ford cars. Equipment includes special manifold, hot air intake connection, gasoline line connection, dash control and throttle connecting rod.

Equipped with this instrument, the Ford engine takes on new life and develops surprising speed. It also throttles down to a point that is almost past belief and no matter what feats of acceleration it is called on to perform, it never fails. Dash control allows the operator to maintain maximum efficiency and economy without regard to thermal changes.

Price of complete equipment with fittings ..\$17.00

J-M Windshield Attachment for Ford Cars



The J-M Windshield Attachment for Ford Cars affords perfect rain-vention and ventilation in all weathers.

Its application will be easily understood by the illustration and is so simple that the car-owner may do it for himself without removing the shield from the car.

It permits the adjustment of the upper part of the shield to any desired angle from wide open to closed. Packed complete, with instructions, \$3.00 per set.

Carter Gravity Gasoline Tank

The Carter Gravity Tank is the greatest improvement in gasoline supply since the days of the "one lung-er." It provides a perfectly automatic, constant supply of gasoline to the carburetor at all speeds on any incline or at any elevation.

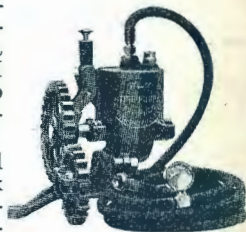
Simply attached to one of the engine cylinders, it has no complicated parts to get out of order; needs no pressure pump or air-tight tank, and will last as long as the car. Price, \$10.00.



J-M Tire Pump (Engine Driven)

To fill the demand for an efficient, durable and compact engine-driven tire pump at a popular price we offer the J-M Tire Pump as the one pump possessing all these qualifications.

Its efficiency is demonstrated by its ability to inflate a 30x 3½-in. tire in less than a minute and larger sizes proportionately.



Its durability is assured by the fact that the cylinder, base and piston are made of the finest grained gray iron and connecting rod of high-grade bronze, machined and ground to a perfect fit. Bearings are wide and possess strength greatly in excess of requirements. Large intake and outlet valves insure against overheating.

The J-M Tire Pump is compact in form, measuring but 3¼x3 in. and weighing less than 5 lbs.

Special brackets and fittings have been designed, which permit of easy installation, by the car owner himself. No machine work or chipping is required, nor is it necessary to readjust any part of the motor. A screw driver, a wrench and file to smooth the slight variations in motor castings are all the tools necessary.

The J-M Tire Pump is the first engine-driven pump, at a price of \$7.50 that is adapted to different makes of cars, and is supplied complete with hose, with a pressure gauge, and necessary fittings and brackets, ready for installation on the following cars :

Fords; Dodge; Models 79-80-81-83 Overlands; Models C-24 C-25, C-33, C-37, D-45 Buicks; 4- and 6-cylinder 1915 Studebaker 1914-1916 Models H-2 and H-4. Chevrolet: Models K and N Hupmobile; 1915-1916 Maxwell; 1914-1916 Chandler; 1912-1916 4-cylinder Reos.

In ordering, specify make and model of car.

Price Complete \$7.50.

J-M Non-Burn Brake Lining

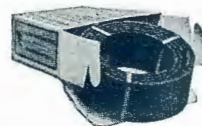
Locks the wheels almost instantly or will stop your car as slowly as desired, according to pressure applied. Frictional heat cannot char nor burn it. Oil, gasoline or water cannot injure it. Does not wear out in spots, therefore exerts equal braking force throughout

its life. Outlasts ordinary linings.

Made of the best grade of asbestos fibre, interwoven with brass wire.

Furnished in cartons containing lining of proper size and length for one set of brakes, ready for immediate installation without cutting.

In ordering state make, model and year of car, size, and whether for internal expanding or external contracting brakes. Prices per foot:—



Thickness	WIDTH					
	1 in.	1¼ in.	1½ in.	1¾ in.	2 in.	
¾ in.	\$.40	\$.50	\$.60	\$.70	\$.80	
5-32 in.	.45	.55	.65	.75	.85	
3-16 in.	.50	.60	.70	.80	.90	
¼ in.	.70	.80	.90	1.00	1.20	
	2¼ in.	2½ in.	2¾ in.	3 in.	4 in.	
¾ in.	\$.90	\$1.00	\$1.10	\$1.20	\$1.40	
5-32 in.	.95	1.05	1.15	1.25	1.55	
3-16 in.	1.00	1.10	1.20	1.30	1.70	
¼ in.	1.30	1.50	1.60	1.70	2.20	

J-M Brake Lining, Special for Ford Cars

A lining of remarkable gripping power and durability, particularly adapted for use on the Ford car. Woven from a specially prepared fabric of great strength and toughness, impregnated with a compound that increases its frictional qualities.

Width, 1½ in., thickness, ⅜ in. Price per foot 42c.

Width, 1¼ in., thickness, ⅜ in. Price per foot 40c.

J-M (Non-Blinding) Lens

Gives Daylight Safety to Night Driving

This lens fitted in your present lamps will give vastly improved lighting efficiency without blinding glare.

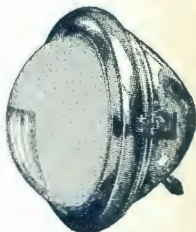
Hemispherical in shape, frosted over its entire surface except for a small area of clear glass slightly below the center. The rays of light are projected through this clear area in a searchlight beam of intense power, which strikes the road far ahead of the car, instead of a wide, blinding glare, produced by the ordinary flat glass.

The frosted portion of the J-M Lens diffuses a soft glow over a wide area, clearly illuminating the front of the car and the sides of the road. With this softly diffused light as a background motorists and pedestrians in front of a car can look right into the projected light and clearly see the approaching vehicle.

The J-M (Non-Blinding) Lens can be used in localities where strict laws are enforced against glaring headlights.

In sizes to fit standard lamps. Quickly and easily installed.

When ordering give both over-all diameter of glass and the exact size of the opening in the glass frame. Price, per pair, \$3.25.



Sizes	Over All		Sizes	Over All	
	Diameter	Dome Diameter		Diameter	Dome Diameter
No. 1	8 in.	7 1/4 in.	No. 7	10 1/4 in.	9 1/2 in.
No. 2	8 1/2 in.	7 3/4 in.	No. 10	10 1/2 in.	9 3/4 in.
No. 3	8 3/4 in.	8 in.	No. 9	11 in.	10 1/4 in.
No. 4	9 in.	8 1/4 in.	No. 00 (Ford E. & J. Lamps)	7 1/3 in.	6 1/4 in.
No. 6	9 1/4 in.	8 1/2 in.	No. 0 (Brown or Victor Lamps)	8 3/4 in.	7 in.
No. 4	9 1/2 in.	8 3/4 in.			
No. 5	10 in.	9 1/4 in.			



With Old Style Lens



With J-M Lens

J-M (Mezger) Soot-Proof Spark Plug

Won't short-circuit; won't leak; won't break down.

The use of a porcelain insulator in the form of a "petticoat" results in the famous *double chamber* construction which prevents short circuits from carbon deposits. The combustion of gas in these chambers has a scouring effect, preventing the formation of an excessive amount of carbon at the firing point.

Special design insures a positively gas-tight plug that will not leak compression.

Two-unit construction permits assembling and disassembling without removing from cylinder. The porcelain used in this plug is tempered by an exclusive process and will not crack when subjected to rapid changes of temperature.

Requires less replacement per unit than any other plug, and with ordinary care will last indefinitely.

For fourteen years the J-M (Mezger) Soot-Proof Spark Plug has held the preference of the hard-to-suit user.

Supplied in 1/2-in. Standard, 7/8-in. A. L. A. M. and Metric Sizes for all makes of automobiles and motor-cycles.

Price, each.....75c



Showing double-chamber construction that guarantees sure-shot ignition.

J-M Eight-Day Auto Clock

Fully Guaranteed

A clock of handsome appearance and excellent timekeeping qualities. Sturdily made, with large, strong pinions that stand shocks, jars and vibration, it has an accuracy that can be depended on. Eight-day, lever escapement movement is permanently encased in dust-, moisture- and tamper-proof protecting case to which the bezel is permanently attached. This unit in turn is carried in an outer case which also completely encloses winding and setting keys and attaching screws.



Dash Mounting

Dash or flush mounting, in black-and-brass, black-and-nickel and all-black. Three-inch white porcelain or silvered dial with black figures or non-gloss black dial with white figures and hands.



Flush Mounting

Either type of mounting, in any finish, complete, with attaching screws. Price....\$5.00

16

J-M Dry Batteries For Ignition Work

Repeated tests show that J-M Dry Batteries give better service and continue to give it for a longer time than any other dry cell.

If J-M Dry Batteries do not prove satisfactory, we will supply new Batteries without cost, issue credit for same, or refund purchase price, including transportation charges.

Made in three sizes, over 1½ volts per cell.

Style	Shape	Amperes Guaranteed	Dimensions	Price Each
"A"	Round	20	2½x6¾ in.	\$.35
"A"	Square	20	2½x6¾ in.	.35
"B"	Round	30	3 x7½ in.	.55
"C"	Round	35	3½x8½ in.	.75

Quantity prices furnished on application.



"Noark" Auto Fuses



Specialy designed for the protection of automobile electric lighting circuits.

Casing	Size	Amperes	Price Each
Glass	1½x¾ in.	1-30	.10
Glass	¾x¼ in.	1-30	.05
Glass	1¼x¼ in.	1-30	.05
Fibre	1¼x¼ in.	1-15	.18
Fibre	1 x¾ in.	1-15	.18
Fibre	2 x½ in.	1-30	.25

The 10, 20 and 30 Ampere Fuses of the 1½x¾ in. and 1¼x¼ in. sizes with Glass or Fibre Casings are known as S.A.E. Standard.



G-P Muffler Cut-Out

The most efficient cut-out on the market. When the cut-out is open, the muffler is completely shut off, the valve making a correct angle to deflect the exhaust gases freely without the possibility of back-pressure. When closed, the pressure of the exhaust gases cannot lift the valve from its seat. No flanges are required in installing. Prices:—

For 1¼, 1½ and 1¾ in. pipe.....	\$4.50
For 2, 2½ and 2¾ in. pipe.....	5.00
For 2¾, 3 and 3¼ in. pipe.....	5.50

Above sizes refer to outside diameter exhaust pipe.

17

J-M Narco Tire Accessories

The country-wide use of these products by dealers, garages and private owners is the best evidence possible that J-M Narco Products are standard in quality and absolutely reliable.

J-M Tirenew

A compound of pure Para rubber which penetrates cuts and crevices in tire treads, and waterproofs the fabric at the base, thereby preventing decay and adding greatly to the life of tire. Also makes tires look clean and fresh.

Protects spare tires from the destructive action of sun and atmosphere. Colors, white and tire-gray. Prices:

12 Oz. Can.....	\$.50	1/2 Gal. Can.....	\$2.15
1 Qt. Can.....	1.15	1 Gal. Can.....	4.00



J-M Narco Tire Cut Filler

The motorist's self-vulcanizer. For repairing and healing casing cuts and abrasions. A heavy semi-liquid rubber compound, which is forced down to the fabric, becoming an integral part of the tire and solid as the tread itself. Frequent use increases life fully 30%. Does away with mastic and rubber cement. Complete in itself and will not deteriorate.

Small Tube 50c. Large Tube \$1.00.



J-M Narco Rubber Reviver and Refinisher

Makes auto tops look like new, and waterproofs them. A rubber compound, not a shiny varnish. The protecting coat is invisible. For all textiles and rubber fabrics, mohair, pantasote, etc. Prices:

1 Qt. Can, \$1.50 1 Gal. Can, \$3.50.



18

J-M Narco Ford Tire Repair Outfit

An economical outfit for making easy and inexpensive home and roadside repairs. Contains a repair for emergency tire troubles and several preventives. In substantial wooden box that can be carried in your tool kit.



Contents: One tube J-M Narco Tire Cut Filler, for closing rents and tears in the casing and preventing decay. One pint can J-M Tirenew, a rubber compound for preventing premature decay; also gives tires fresh, new look. One J-M Tirenew Brush. One Flap Blow-Out Patch for 3-in. and 3 1/2-in. tires. One strip J-M Narco Patching Rubber for inner tubes. One large can J-M Narco Self-Vulcanizing Cement. One tube J-M Narco Non-Inflammable, Triple-Strength Rubber Cement. Three J-M Narco Cementless Patches. Price Complete, \$2.00.

J-M Narco Vulcanizing Outfits

For motorists operating a small vulcanizer. The economical way of buying cement and rubber with the assurance that both will be in prime condition.



Outfit No. 1. One two-ounce can J-M Narco Five-Minute Cure Vulcanizing Cement. One 2 1/2 x 12-in. Sheet J-M Narco Five-Minute Cure Tube Stock. One 2 1/2 x 12-in. Sheet J-M Narco Thirty-Minute Casting Stock.

Outfit No. 2. One two-ounce can J-M Narco Five-Minute Cure Vulcanizing Cement. One 2 1/2 x 24-in. Sheet J-M Narco Five-Minute Cure Tube Stock.

Outfit No. 4. One two-ounce can J-M Narco Five-Minute Cure Vulcanizing Cement. One 2 1/2 x 12-in. Sheet J-M Narco Five-Minute Cure Tube Stock. One 2 1/2 x 12-in. Sheet J-M Narco Semi-Cure Repair Stock. Price Each, 50c.

J-M Narco Cementless Patches

Remarkable adhesive qualities. Require neither acid nor cement. Molded with feather edge; very flexible, to conform to tube. Three sizes and shapes, round and elliptical, for nearly every patch condition. In moisture-proof steel boxes.

Ten Patches in Box. Price 50c.

19

J-M Narco Auto Patching Cement

A highly concentrated, air-drying cement of unexcelled adhesive quality, for tubes, etc. Prices:

1 Oz. Tube...	\$.07	½ Pt. Can...	\$.38
1½ Oz. Tube..	.10	1 Pt. Can....	.70
4 Oz. Can.....	.20	1 Qt. Can....	1.35

J-M Narco Vulcanizing Cements

No. 2045 B. J-M Narco *Five-Minute Cure Vulcanizing Cement*. Makes perfect joint in 5 minutes. Very strong. Prices:

¼ Pt. Can..	\$.25	1 Qt. Can....	\$1.10
1 Pt. Can..	.60	½ Gal. Can..	2.10
		1 Gal. Can.	\$3.90

No. 2046 B. J-M Narco *General Vulcanizing Cement*. Gives good firm weld. Particularly free from bubbles. Prices:—

¼ Pt. Can....	\$.25	1 Qt. Can....	\$.80
1 Pt. Can....	.45	½ Gal. Can...	1.50
		1 Gal. Can....	\$2.80

J-M Narco ^{Non-Inflammable Triple Strength} Rubber Cement

For repairing inner tubes, water bags, rubber boots and general patching. A highly perfected rubber cement of extraordinary adhesion. Contains no gasoline or benzine. Non-explosive and non-deteriorating. Prices:—

1 Oz. Tube...\$.10	4 Oz. Can....\$.25
4 Oz. Tube...\$.25	1 Pt. Can....	1.00

J-M Auto Tape

For Insulating Automobile or Garage Wiring



Closely woven, with both sides uniformly covered with insulating compound. Every thread is thoroughly impregnated by means of our specially designed calendar machines, insuring great insulating efficiency and adhesive power. Made in one brand, No. 5, and put up in 8 oz. rolls, ¾ in. wide. Price, 30c. per roll.

J-M Fire Extinguisher

The most effective extinguisher for gasoline, acetylene, oil, and other fires.



The J-M Fire Extinguisher offers an entirely new feature which is invaluable when fighting fires in cramped quarters, where space does not permit the use of an extinguisher of the squirt gun type. A few strokes of the plunger charges a reservoir with compressed air, which on liberation, discharges the extinguishing fluid in a powerful stream a distance of thirty feet, if required, right into the heart of the fire, smothering it in a blanket of heavy, impervious vapor, extinguishing the most vicious blaze in a few seconds.

A reduction of 15% is made by all companies on fire insurance premiums for automobiles carrying the J-M Extinguisher.

Motor boat regulations compel the carrying of an efficient extinguisher on every motor boat. The J-M Extinguisher complies fully with every requirement.

The J-M Fire Extinguisher is inspected, approved and labelled by the Underwriters' Laboratories, Inc. Listed as an approved fire appliance by the National Board of Fire Underwriters.

Ready charged. Sealed against tampering.

Price, bracket included..... \$8.00.

Re-charging liquid, price per quart, \$1.00.

J-M Permanite Sheet Packing

For Automobile Service

Resilient and pliable; makes permanent leak-proof joints without following up. Never blows out, burns out nor squeezes out. The fact that it stands the highest pressures, and temperatures up to 1,000 degrees F.; packs air, water, oils, etc., makes it the most suitable sheet to use in automobile repairing or manufacturing.



Many motor troubles begin with a small leakage through inlet connections, spark plug washers, etc. J-M Permanite eliminates these leakages completely.

Furnished in sheets 54 in. x 63 in. and in thicknesses from $\frac{1}{4}$ in. to $\frac{1}{8}$ in. Prices on application.

J-M Permanite Washers

Made of the above Material For Spark Plugs

These washers prevent leakage between the cylinder casting and plug. Prices on application.

J-M Mobilene Sheet Packing

For Gasoline Engine Cylinder Heads

This is the original asbesto-metallic fabric sheet produced for packing gas and gasoline engine cylinder heads. Made of asbestos fabric with strands of fine brass wire interwoven.

Graphited on one side so that it will readily separate from one surface and coated with a special compound on the other, which allows it to adhere to the other surface.

Furnished in rolls 40 in. wide, $\frac{1}{32}$ in. and $\frac{1}{16}$ in. thick. Price per lb. \$1.50.

J-M Asbestos Motor Cement

For Insulating the Hot Places

Made of Asbestos, forming an absolutely fireproof covering for heated surfaces of all kinds. Particularly adapted for cylinders, mufflers, etc., on gas and gasoline engines.

Easily applied, very adhesive, and withstands vibration and rough usage without damage.

Put up in convenient 5-lb. packages. Price, per package, 50c.

J-M Asbestos Roll Fire-Felt

For Covering Exhaust Pipes, Etc.

Being made entirely of pure Asbestos, this material is absolutely fireproof. It is flexible, and can be easily wrapped around heated pipes. Especially adapted for motor boat gas-engine exhaust pipes, to prevent charring woodwork.

Furnished in rolls 3 feet wide, $\frac{1}{8}$ in. and $\frac{1}{4}$ in. thick, containing 300 square feet. Prices:—

$\frac{3}{32}$ in. thick.....	12c. per sq. ft.
$\frac{1}{8}$ in. thick.....	16c. per sq. ft.
$\frac{1}{4}$ in. thick.....	20c. per sq. ft.

J-M Leak-No

For Permanently Repairing Leaks in Iron and Steel

A metallic compound which, when mixed with water and applied like putty, permanently repairs any ordinary leak in iron or steel. Warranted to stand any heat or chemicals that iron or steel is proof against, and any pressure of oil, gas, steam, air, ammonia or water, if applied according to directions. Prices:—



5-lb. can.....	90c. per lb.
25-lb. can.....	85c. per lb.
50-lb. can.....	75c. per lb.