

"Ever Ready"  
Tourometer  
**\$25.00**

With or without  
maximum hand  
60 mile. 3 inch dia  
10,000 mile season  
and 100 mile trip  
odometer, with quick  
reset. Adjustable  
dash bracket.



"Ever Ready"  
Tourometer-Twin  
**\$40.00**

Tourometer speedometer, eight day clock and electric  
light attachment. Each dial 3 inches.

**AAP**  
"EVER READY"  
SPEEDOMETERS

SEASON OF 1910

THE GREATEST LINE  
OF SPEEDOMETERS  
EVER PRODUCED.

Greatest in mechanical construction,  
accuracy and durability. Neatest  
in appearance and most reasonable  
in price.

FILE COPY  
PATENT LIBRARY  
AMA - DETROIT  
10041910  
YEAR CODE SUPER

Absolutely Guaranteed

Auto Improvement Co.

304-322 Hudson Street

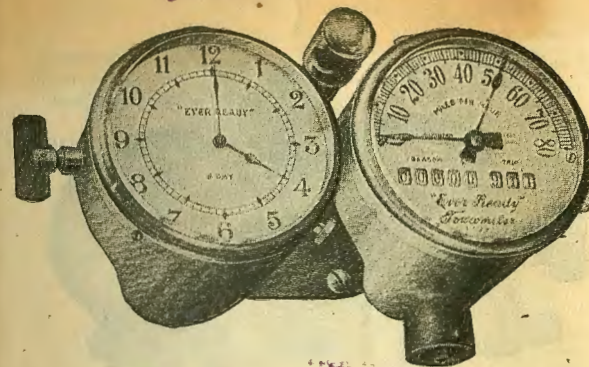
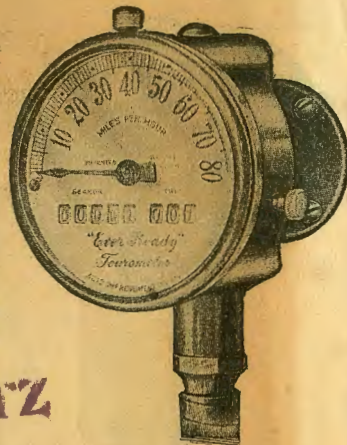
New York.

755 Folsom Street

San Francisco, Cal.

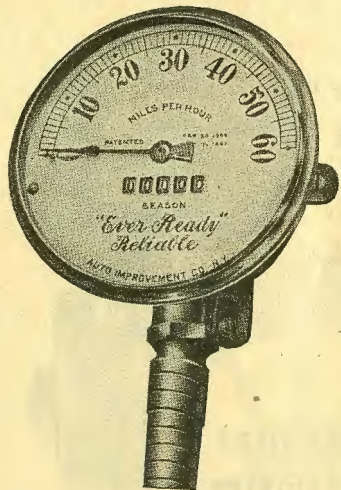
"Ever Ready"  
80 Mile  
Tourometer  
**\$30.00**

With or without  
maximum hand  
3 inch dial. 10,000  
mile season and 100  
mile trip odometer,  
with quick reset.



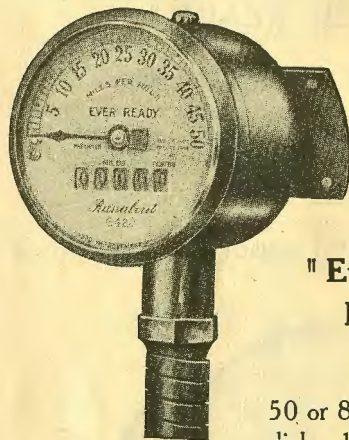
"Ever Ready"  
80 Mile Tourometer-Twin  
**\$45.00**

Combining speedometer, eight day clock and electric  
light attachment. Each dial 3 inches.



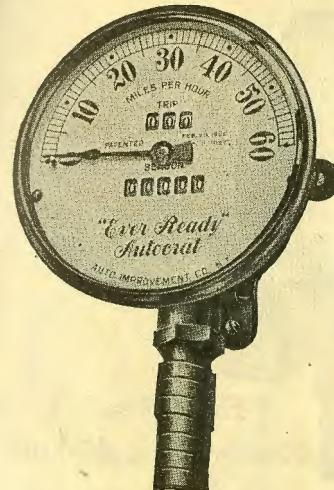
**"Ever Ready"**  
**Reliable**  
**\$15.00**

60 mile. 4 inch dial.  
10,000 mile season  
odometer.



**"Ever Ready"**  
**Runabout**  
**\$15.00**

50 or 80 mile. 2 5/8 inch  
dial. 10,000 mile season  
odometer.

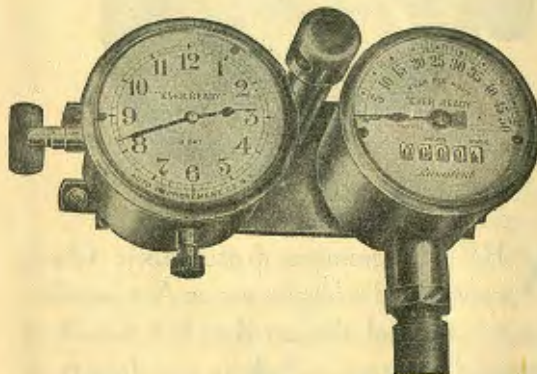


**"Ever Ready"**  
**Autocrat**  
**\$20.00**

60 mile. 4 inch dial.  
10,000 mile season  
and 100 mile trip  
odometer with quick  
reset.

**"Ever Ready"**  
**Reliable - Twin**  
**\$30.00**

Reliable speedometer.  
4 inch dial. Eight day  
clock. 2 5/8 inch dial.  
Electric light attachment.  
Adjustable dash board  
bracket.

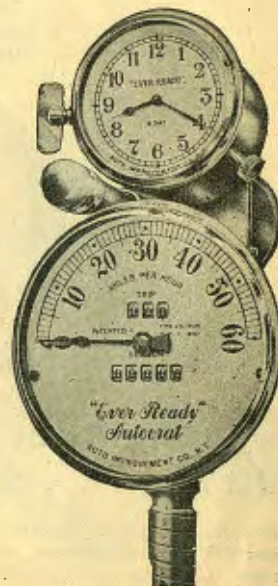


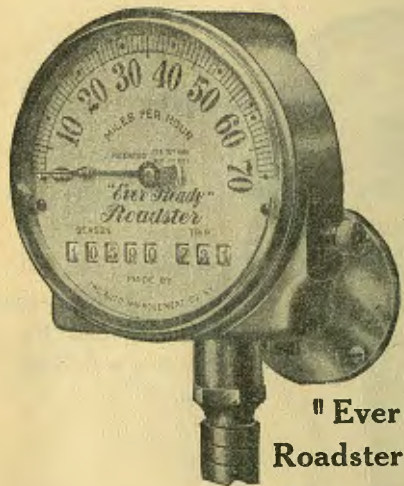
**"Ever Ready"**  
**Runabout - Twin**  
**\$30.00**

Runabout speedometer, eight day clock and electric  
light attachment. Both dials 2 5/8 inches.

**"Ever Ready"**  
**Autocrat - Twin**  
**\$35.00**

Autocrat Speedometer,  
4 inch dial. Eight day  
clock, 2 5/8 inch dial.  
Electric light attachment.  
Adjustable dash bracket-





" Ever Ready "  
Roadster . . \$30.00

With or without maximum hand.  
70 mile. 4 inch dial. 10,000 mile  
season and 100 mile trip odometer,  
with quick reset.



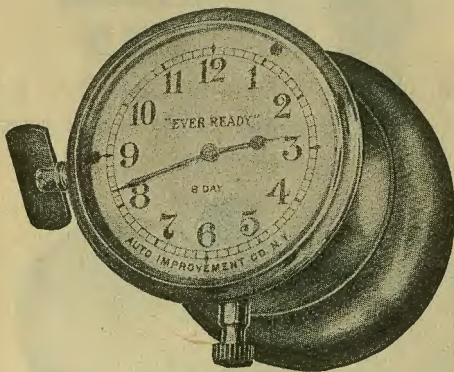
" Ever Ready "  
Universal . . . \$40.00

70 mile. 4 inch dial. 10,000 mile season  
and 100 mile trip odometer, with quick  
reset. Clock contained in the dial.

" EVER READY "  
EIGHT DAY CLOCK

\$10.00

THIEF PROOF—DUST PROOF—WATER PROOF



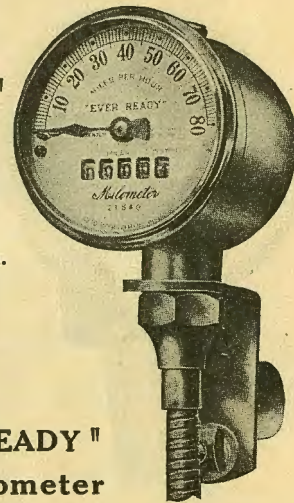
A REAL, genuine Automobile Clock  
constructed solely for use on Automobiles.  
The vibration of the car does not disturb its  
wonderful accuracy. Built in our factory at  
Berlin, Germany, by Europe's most expert  
clock makers.

☞ This clock is used in connection with all of our  
Twin Speedometers which made such a remarkable  
record during 1909.

For Motorcycles.

" EVER READY "  
MILOMETER

\$15.00

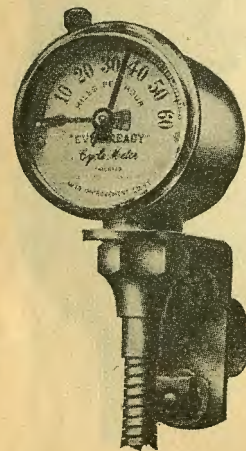


80 mile. 2 5/8 inch dial.  
10,000 mile season  
odometer.

" EVER READY "  
Trip - Milometer

\$17.50

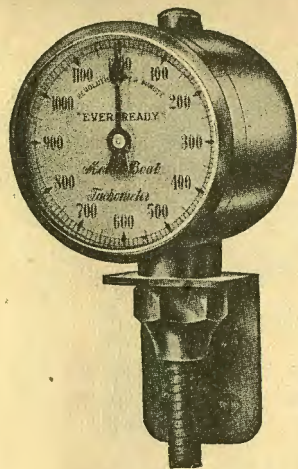
60 mile. 2 5/8 inch dial. 10,000 mile season and  
100 mile trip odometer with quick reset.



" EVER READY "  
CYCLE-METER

\$12.00

With or without  
maximum hand.  
60 mile.



FOR  
MOTOR BOATS  
AND  
AIR SHIPS

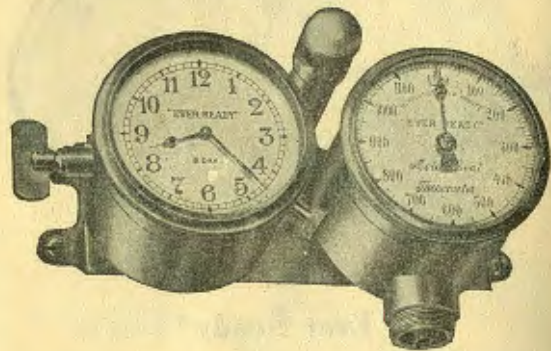
---

**"Ever Ready"  
Tachometer**

**\$20.00**

---

Gives the correct  
revolutions of  
the engine



**"EVER READY"  
TACHOMETER - TWIN**

**\$35.00**

**"EVER READY"  
SPEEDOMETERS**

are operated by centrifugal force, a principle that is endorsed by practically every expert on speed indication. This construction is vastly superior to other types and is not affected by climatic conditions nor subjected to over sensitiveness. That is why the "Ever Ready" hand is invariably steady on all speeds from one mile up.

**SHAFT**

¶ We use a monocoil, steel inner shaft, protected by a brass, steel-lined casing. An "Ever Ready" shaft will give more accurate results than that of any other make and it has fifty per cent longer life.

**A WONDERFUL TEST**

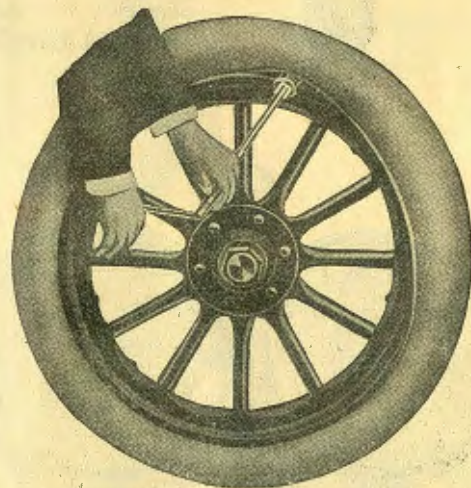
¶ Each "Ever Ready" speedometer is given a test of 2000 miles in actual running, before it leaves the factory. This is accomplished by a special scientific machine which tests the instrument on various speeds. When we ship a speedometer we know it is mechanically perfect.

**"EVER READY"  
TIRE TOOL  
\$6.00**

INCLUDING CLAMP AND LUG HOOK

---

**Clincher Tires instantly rolled on or off.  
No effort—no trouble**



¶ More than 40,000 now in use. It's so simple that anyone can use it. There is no excuse in any man sweating blood over clincher tires, when we can make it a snap for him.

---

**When folded it fits in any tool box**