

CORBIN BROWN

Speedometer



New York Army
Jan 6 To 13, 1917
FORD SPECIAL

Price \$12.00

INSTALLING BRACKETS

Bracket is made to fit the
in the dash—is regular
less otherwise specified.



Bracket, though firm and
adjusted to four positions
two screws. Thus is
to obtain exactly the
point to his range of vision.



**SPEEDOMETERS
FOR AUTOMOBILES
AND MOTORCYCLES**

Chicago and Cleveland Shows
Jan 27 To Feb 3, 1917

THE CORBIN SCREW CORPORATION
THE AMERICAN HARDWARE CORPORATION, SUCCESSOR
NEW BRITAIN, CONNECTICUT, U. S. A.

Collected Chicago Show
Jan 27 To Feb 3, 1917
Corbin-Brown Speedometer

The Speedometer of Accuracy



WHAT make of speedometer will serve you best for automobile or for motorcycle?

You cannot be too careful in your choice.

For in view of the claims of superiority made for every type on the market, there is a strong possibility of an injudicious selection.

Your future satisfaction demands that you permit yourself to be influenced by facts alone.

Because of the following facts, the Corbin-Brown Speedometer for Automobiles and Motorcycles merits your preference.

The Corbin-Brown Speedometer is manufactured and sold by the Corbin Screw Corporation—a fact which in itself is a guarantee of quality.

Thousands of dealers and hundreds of thousands of consumers throughout the country have for more than forty years found the many products manufactured by this Company to measure up to the most exacting standards.

The Corbin-Brown Speedometer is built on the centrifugal principle of physics.

This means that it is absolutely accurate at all times—because science has proved that a mechanism built on the centrifugal principle is not affected by changes in temperature or by electrical influence.

As a result the Corbin-Brown is just as accurate whether the thermometer registers high or low.

The fact that the Corbin-Brown is not affected by electrical influence means much to the owner of an automobile equipped with an electric lighting system, electric self-starter, etc.—because the resultant increased electrical influence does not affect its accuracy.

The Corbin-Brown is extremely simple in mechanism, it has compound governors which make it particularly sensitive and it will record accurately as low as two miles per hour. These compound governors absorb all the shock to which a car is subjected and should it be driven over ruts or railroad ties, the indicating hand remains absolutely steady and does not wobble no matter how severe a jolt the car may receive.

The indicating hand of the Corbin-Brown Speedometer is pivoted in the center. It allows practically three-fourths of the circumference for the calibration, thereby permitting absolutely easy reading.

The trip-odometer is *below* the indicating hand and its reading is at no time interfered with while the car is in motion.

The model AA Corbin-Brown Speedometer has a trip odometer that can be re-set to any tenth of a mile. The figures are large and can be easily read by the driver.

The season odometer is 100,000 mile, with automatic re-set to zero, when the limit is reached.

We can furnish model A or B with odometer, having an instantaneous re-set. On this type of odometer, we have installed a new device whereby the odometer can be re-set to zero, no matter how fast the car may be moving, without any danger of the odometer sticking and causing trouble as is the case with the ordinary odometer with the instantaneous re-set.

The Corbin-Brown Speedometer can be connected either to the right wheel or the left wheel and the instrument records

speed and mileage whether the car is moving forwards or backwards. In some speedometers of other manufacturers when the car is moving backwards, the indicating hand does not record any speed, while the odometer subtracts mileage instead of adding to it.

The Corbin-Brown Speedometer is made of the highest grade of material, specially hardened steel, and full ball bearings.

Every Corbin-Brown Speedometer is calibrated by hand and tested to absolute accuracy before being sent out.

We can furnish with the Corbin-Brown Speedometer, a cable of the monocoil type or a cable of the alternate dumb bell and shoe hook links. This form of cable is particularly strong and capable of standing any strain to which it is subjected.

The Corbin-Brown Speedometer is well supplied with Service Stations. We are adding to this list constantly and we guarantee that our Service Stations throughout the country are adequate for all purposes.

Any Corbin-Brown Speedometer having a model A odometer can be furnished with a maximum hand which, if desired, can be locked to prevent re-setting by the operator.

Specify the Corbin-Brown Speedometer for Automobiles!
Equip with the Corbin-Brown Speedometer for Motorcycles!

The Corbin Screw Corporation

The American Hardware Corporation, Successors
New Britain, Conn., U. S. A.

DISTRIBUTORS

The Corbin Screw Corporation of New York
94-96-98 Lafayette Street

P. & F. Corbin of Philadelphia
N. W. Cor. 8th and Arch Streets

The Corbin Screw Division
The American Hardware Corporation of Chicago
335 Wells Street



Showing Simplicity of

Corbin-Brown Mechanism

Simplicity spells efficiency.

Note the absence of complicated mechanism.

In the Corbin-Brown Speedometer, the parts are few and big and strong.

Its centrifugal governor has four balance weights so sensitive that they respond to the slightest variation in speed.

This centrifugal principle of the Corbin-Brown Speedometer is the same as that applied to the regulation of engines. It insures absolute regularity of revolution.

Any Corbin-Brown Speedometer may be connected either on the left or right wheel of automobile, as may be desired.

Ford Special



Price \$12.00

The Ford Special is Fitted with a Bracket that Can be Adjusted to the Driver's Angle of Vision

DIRECTIONS FOR ATTACHING

The Corbin-Brown Ford Special Speedometer is a carefully made instrument with parts of brass, tempered steel, and with full ball bearings. It has a three inch brown dial, sixty mile limit, 100,000 mile season odometer, 100 mile trip odometer, combination of links cable, and a rigid attaching bracket.

The hand does not wobble, and the speedometer is not affected by heat, cold, or electrical influences.

The instrument is furnished in Black Enamel with brass rim to match the Ford trim, complete with gear, cable, etc., all ready to attach to car.

The large driving gear is made to go over the wheel flange, permitting it to be fastened to the wooden section of the hub with wood screws.

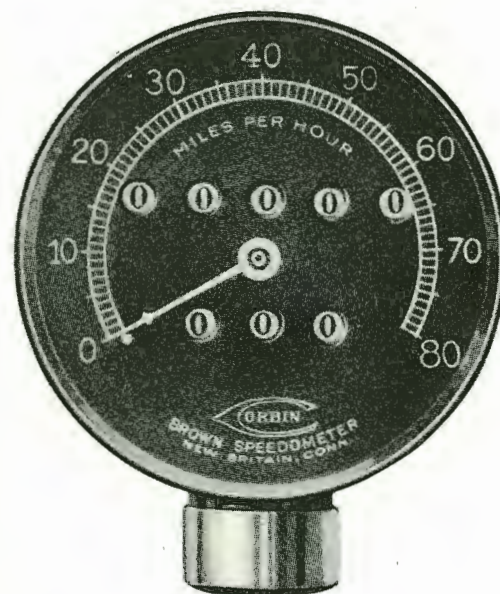
Washers of proper thickness are furnished to place between the large gear and the hub, to bring into alignment the small gear which connects with the cable.

To attach the large gear to the hub, take off the wheel, place the large gear over the flange and having the wheel flange in exact center of inner circumference of large gear, mark where holes are to be drilled in hub for wood screws, then drill holes with No. 30 gauge drill, place the washers between the large gear and the hub, insert screws through large gear and washers and screw down tight.

An instrument similar to the Ford Special and at the same price can be furnished for any make of cycle car.

Price List of Parts
for
Motorcycle Speedometers
Rear and Front Drive
also
Automobile Speedometers

For Motorcycles



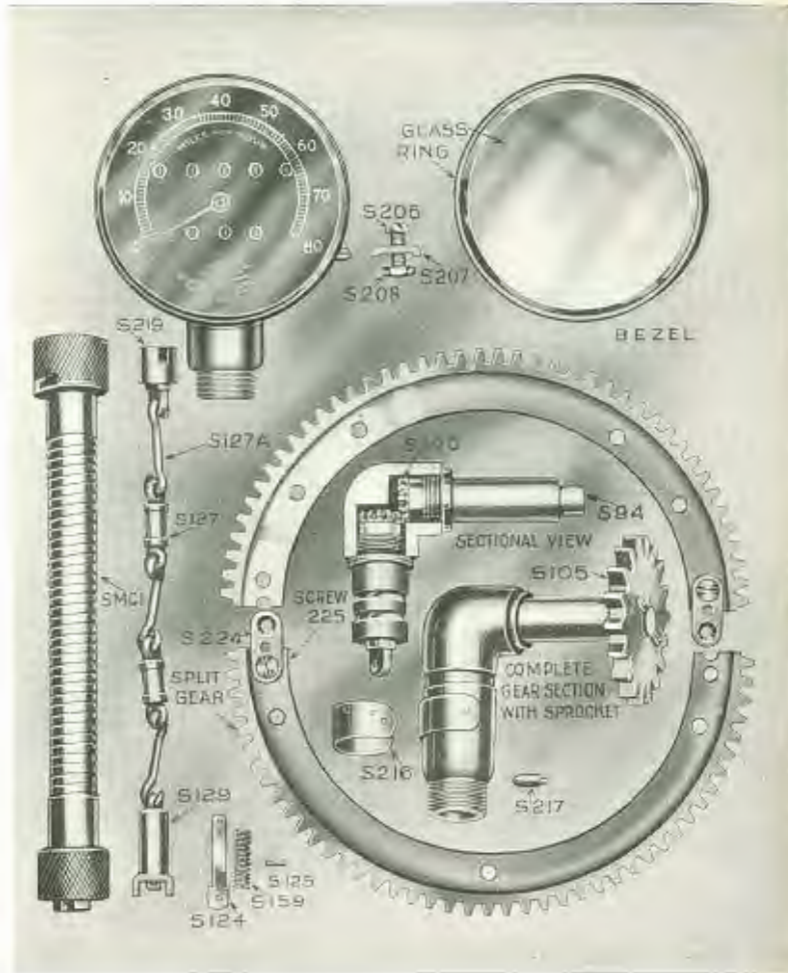
Model A. M.
Price \$12.00

Any Corbin-Brown Motorcycle Speedometer at a small additional charge can be provided with a maximum hand which will show the highest speed at which the motorcycle is ridden.

Can be attached by any motorcycle dealer or repair shop.

When ordering speedometers, please give name and model number of motorcycle and size of tires.

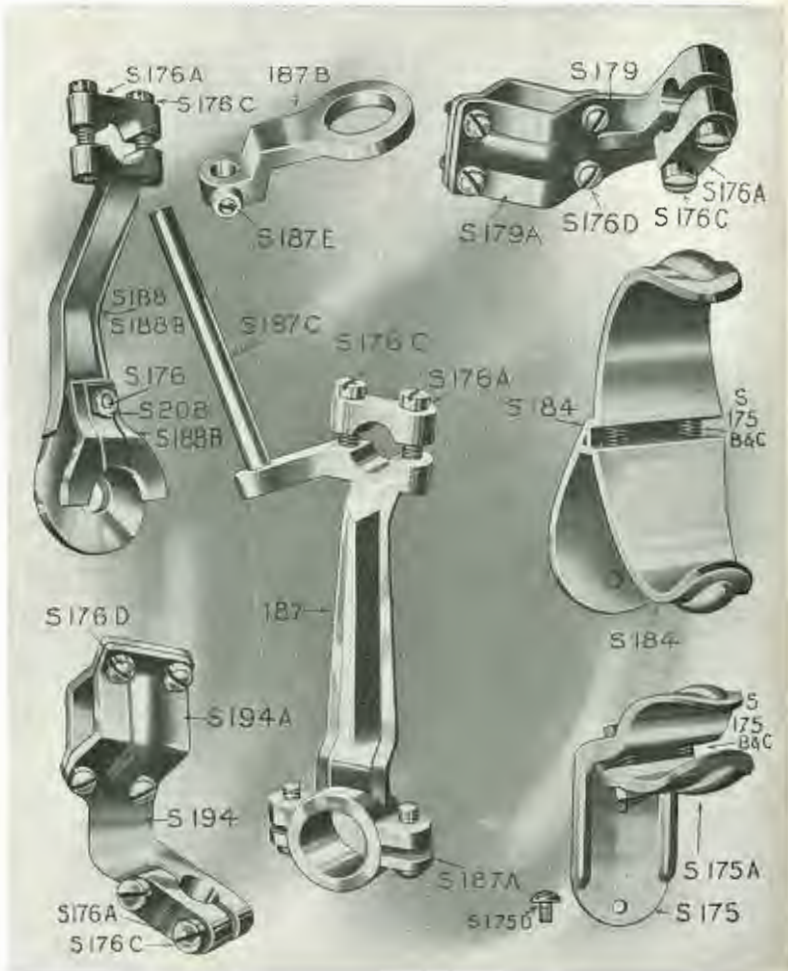
Motorcycle Rear Drive Attachments



Motorcycle Rear Drive Parts and Attachments

PART NO.	Model "A. M."	LIST EACH
MC-1	Head of Speedometer only	\$6.00
MC-2	Complete Driving Cable 5/8", 33, 34, 35, 37, 40 long	2.50
	Complete Inside Shaft for 5/8" Cable, per ft.	.25
	" " " 1/2" Cable, per ft.	.25
S-127	Steel Links for Shaft 5/8"	.10
S-127A	Wire Links for Shaft 5/8"	.10
S-129	Spring Link Outside Sleeve 5/8"	.15
S-124	Plunger	.10
S-125	Pin	.05
S-159	Sleeve Plunger Spring	.05
S-219	Rear Drive Cable Connection	.15
Gear Section Complete With Small Sprocket		2.50
S-101	Small Gear, 14 Teeth, Steel or Fibre	.25
S-102	" " 15 " " " "	.25
S-103	" " 16 " " " "	.25
S-104	" " 17 " " " "	.25
S-105	" " 18 " " " "	.25
S-106	" " 19 " " " "	.25
S-107	" " 20 " " " "	.25
S-216	Steel Spring for Rear Clutch	.05
S-217	Clutch Spring Stud	.05
S-223	Large Split Gear, 64 Teeth, Screws and Clips	.60
S-223A	" " 70 " " " "	.60
S-223B	" " 72 " " " "	.60
S-224	Clamps (2 in a set)	.15
S-225	Clamp Screws (4 in a set)	.05
S-206-207-208	Spoke Clips (5 in a set)	.15
Regular Gear Bracket Complete for following: (Indian, 1912; Thor, 1913; Yale; Haverford; Iver-Johnson; Dayton; Pope Model H and K).		1.00
S-176	Gear Bracket	.50
S-176A	Cap	.25
S-176B	Clamp	.20
S-176C	Screws (2 large)	.05
S-176D	" (4 small)	.05
Special Gear Bracket Complete for Excelsior 1913 and 1914.		1.00
S-183	Gear Bracket for Excelsior	.50
S-176A	Cap	.25
S-176B	Clamp	.15
S-176C	Screws (2 large)	.05
S-176D	" (4 small)	.05
Special Gear Bracket Complete for Excelsior 1915 Model.		1.00
S-183C	Gear Bracket for Excelsior	.50
S-183D	Clamp	.25
S-176A	Cap	.15
S-176C	Screws (2 large)	.05
S-176D	" (4 small)	.05
Special Gear Bracket Complete for Indian 1913.		1.00
S-177	Gear Bracket, Indian	.50
S-176A	Cap	.25
S-176B	Clamp	.15
S-176C	Screws (2 large)	.05
S-176D	" (4 small)	.05

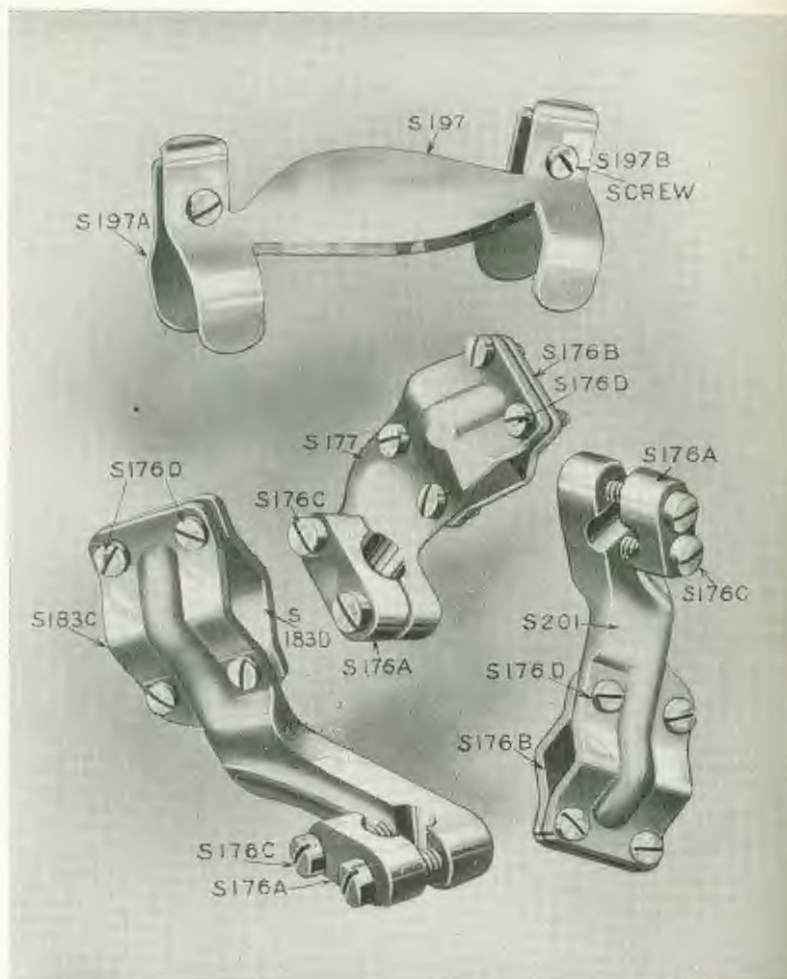
Motorcycle Rear Drive Attachments



Motorcycle Rear Drive Parts and Attachments

PART NO.		"Model A. M."	LIST EACH
Special Gear Bracket Complete for Henderson, 1913			\$1.00
S-179	Gear Bracket, Henderson		.50
S-176A	" " Cap		.25
S-176B	" " Clamp		.15
S-176C	" " Screws (2 large)		.05
S-176D	" " " (4 small)		.05
Special Gear Bracket Complete, Pope Model L & M, 1913			1.50
S-187	Gear Bracket, Pope L & M		.50
S-187A	" " Clamp		.15
S-176A	" " Cap		.25
S-187B	" " Guide		.40
S-187C	" " Stud Pope, L & M		.15
S-187D	" " Washers (2 only) Pope, L & M		.05
S-187E	" " Screws (1 only) Pope, L & M		.05
S-176B	" " Clamp Screws (2 only) Pope, L & M		.05
S-176C	" " Cap Screws (2 only) Pope, L & M		.05
Special Gear Bracket Complete for Pope Model R			1.50
S-205	Gear Bracket for Pope Model R		.50
S-205A	" " Clamp		.15
S-176A	" " Cap		.25
S-205B	" " Guide		.40
S-187C	" " Stud		.15
S-187E	" " Screw		.05
S-176C	" " Cap Screw		.05
S-176D	" " Clamp		.05
Special Gear Bracket Complete for following: Sears-Roebuck; Eagle; Schickel; Flanders; De Luxe; Minneapolis; Reading Standard, 1914			1.00
S-178	Gear Bracket for above		.50
S-176A	" " Cap for above		.25
S-176B	" " Clamp for above		.15
S-176C	" " Screws (2 large)		.05
S-176D	" " " (4 small)		.05
Special Gear Bracket Complete for 1915 Reading Standard			1.00
S-201	Gear Bracket for Reading		.50
S-176A	" " Cap		.25
S-176B	" " Clamp		.15
S-176C	" " Screws (2 large)		.05
S-176D	" " " (4 small)		.05

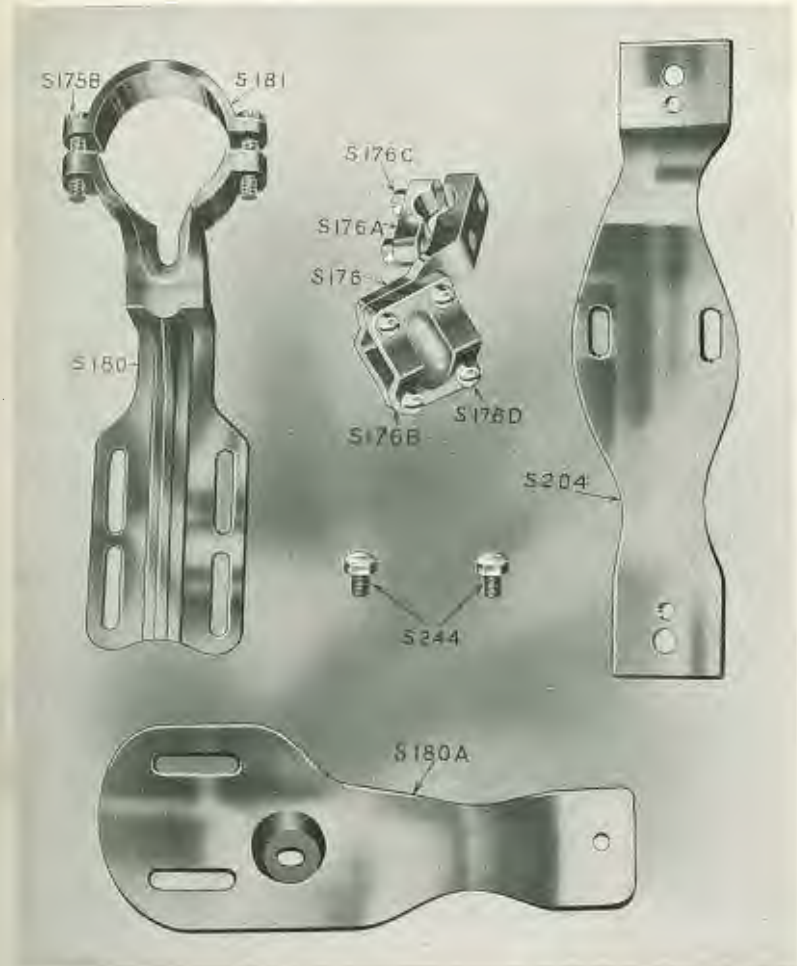
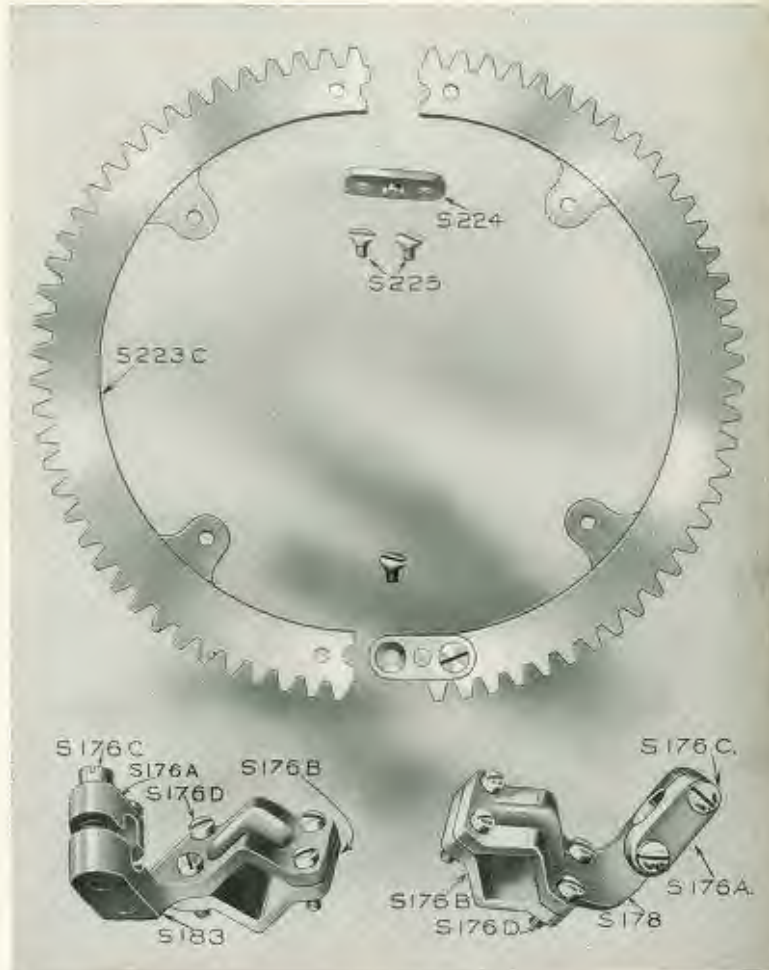
Motorcycle Rear Drive Attachments



Motorcycle Rear Drive Parts and Attachments

PART NO.	LIST EACH
Special Gear Bracket for Merkel	\$1.00
S-194 Gear Bracket50
S-194A " " Clamp15
S-176C " " Screws (2 large)05
S-176A " " Cap25
S-176D " " Screws (4 small)05
Special Gear Bracket Complete for Jefferson 28" or 29" Wheel	1.25
S-188 Gear Bracket for 28" wheel50
S-188B " " " 29" "50
S-188A " " Clamp for 28" and 29" wheel15
S-176A " " Cap25
S-176C " " Screws (2 large)05
S-176D " " Clamp "05
S-208 " " " " Nut05
Special Gear Bracket Complete for Emblem, 1915	1.00
S-157 Gear Bracket for Emblem50
S-183D " " Clamp15
S-176A " " Cap25
S-176C " " Screws (2 large)05
S-176D " " " (4 small)05
Special Gear Bracket Complete for Henderson	1.00
S-179 Gear Bracket for above50
S-179A " " Clamp15
S-176A " " Cap25
S-176C " " Screws (2 large)05
S-176D " " " (4 small)05
Regular Head Bracket Complete	1.00
S-175 Head Bracket50
S-175A " " Clamp25
S-175B & C Head Bracket Screws and Nuts05
Special Head Bracket Complete for Harley-Davidson & Pope	1.25
S-180 Head Bracket Harley-Davidson & Pope25
S-181 " " Clamp, Harley-Davidson & Pope25
S-244 " " Speedometer Screws (2 only)05
S-175B " " Clamp Screws (2 only)05
S-176C Head Screws (2 in a set)05
S-204 Head Bracket for Pope Model R & Harley-Davidson, 1915	1.00
S-180A Head Bracket for Harley-Davidson, Electric Equipped	1.00

Motorcycle Rear Drive Attachments

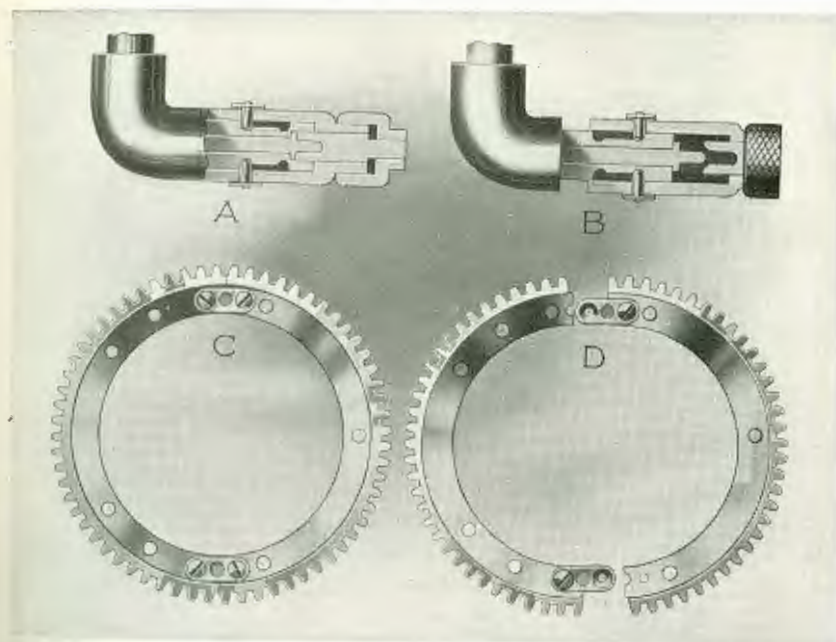


Motorcycle Rear Drive Parts and Attachments

PART NO.	LIST EACH
Special Head Bracket Complete for Pierce	\$1.00
S-184 Head Bracket for Pierce50
S-184A " " Clamp Pierce25
S-175B & C Head Bracket Clamp Screws & Nuts05
Special Head Bracket Complete for Monarch	1.00
S-182 Bracket for Monarch50
S-182A " Clamp for Monarch25
S-175B & C Bracket Clamp Screws and Nuts05
Special Head Bracket Complete for Schickel	1.25
S-196 Head Bracket for Schickel50
S-196A " " Cap25
S-196B " " Support30
Head Bracket Screws05
Diehl Head Bracket Complete	1.00
S-195 Diehl Head Bracket50
S-195A " " " Clamp25
S-195B & C Head Bracket Screws and Nuts05
S223C 70-Tooth Sprocket Indian Spec.60
S223D 72-Tooth " " " "60
Indian Head Bracket Complete	1.00
S-197 Head Bracket for Indian50
S-197A " " Clamp25
S-197B " " Screws05
Regular Excelsior Head Bracket Complete, 1915	1.00
S-183A Head Bracket for Excelsior50
S-175A " " Clamp25
S-175B " " Screws05
S-175C " " Nuts05
Excelsior Left Side Head Bracket Complete, 1915	1.00
S-183B Head Bracket50
S-175A " " Clamp25
S-175B " " Screws05
S-175C " " Nuts05
Glass Spun in Ring and Bezel50
Repairing and Adjusting Speedometer, Net	3.00

Motorcycle Rear Drive Attachments

Showing clutch that is instantly disengaged from driving sprocket, making false registration impossible by preventing recording of mileage while machine is being tuned up on stand. A slight pull of the cable does it.

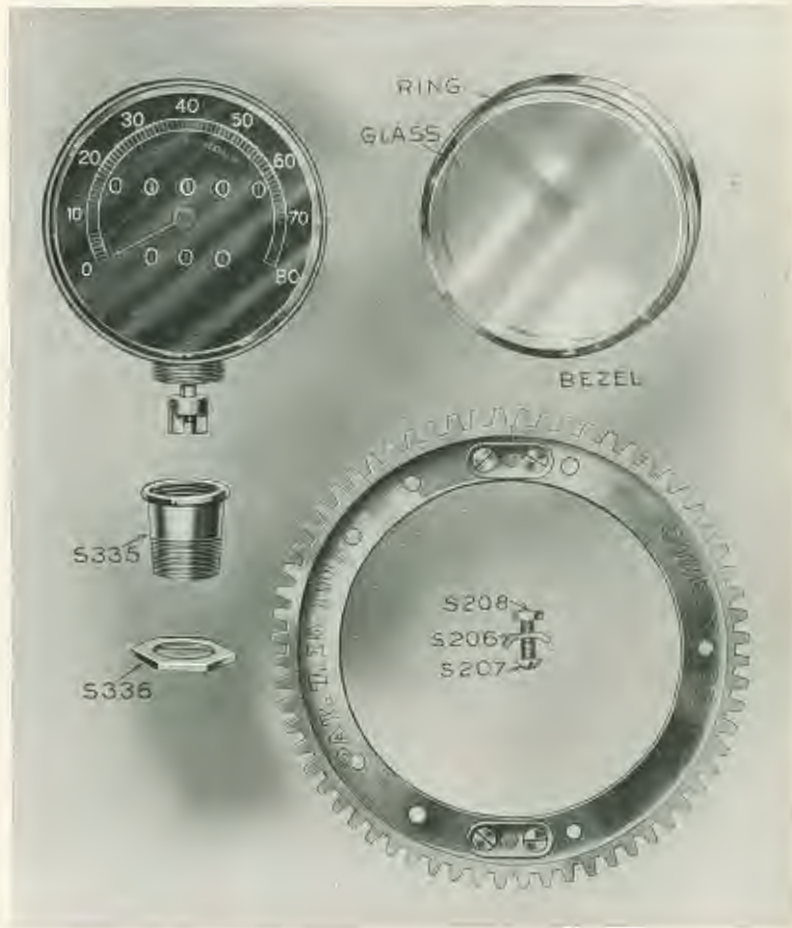


A. Showing Clutch Engaged. B. Showing Clutch Disengaged. C. Showing Sections of Large Sprocket Joined. D. Showing Large Sprocket in Sections.

When ordering speedometers, always state whether rear or front drive is desired, and mention make and model of machine as well as size of tires.

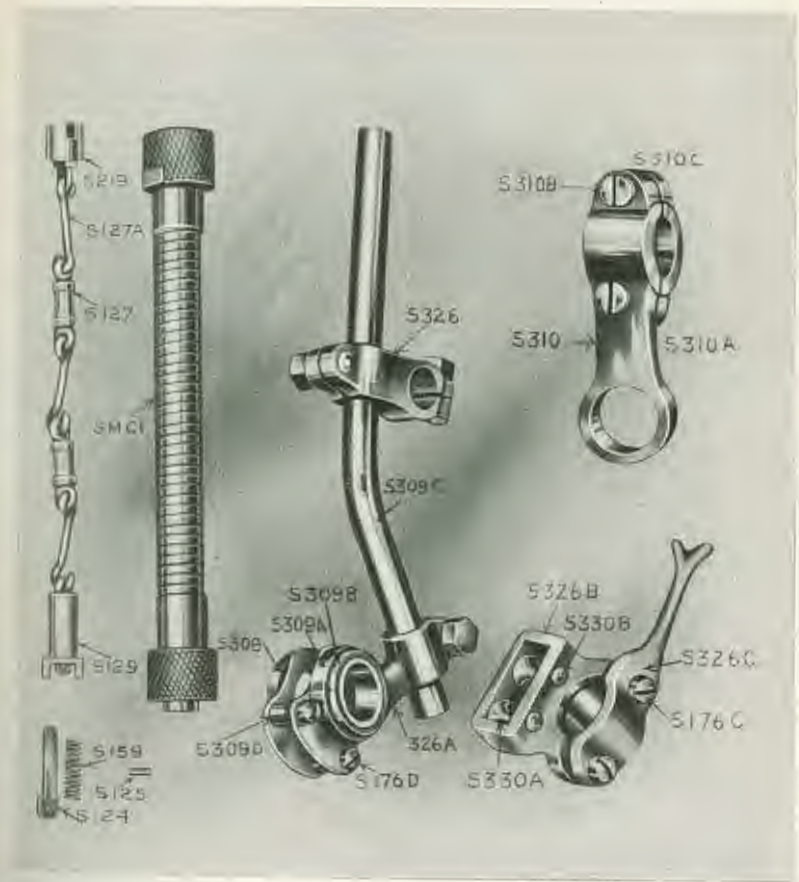
Motorcycle Front Drive Attachments

"Model A. M."



Motorcycle Front Drive Attachments

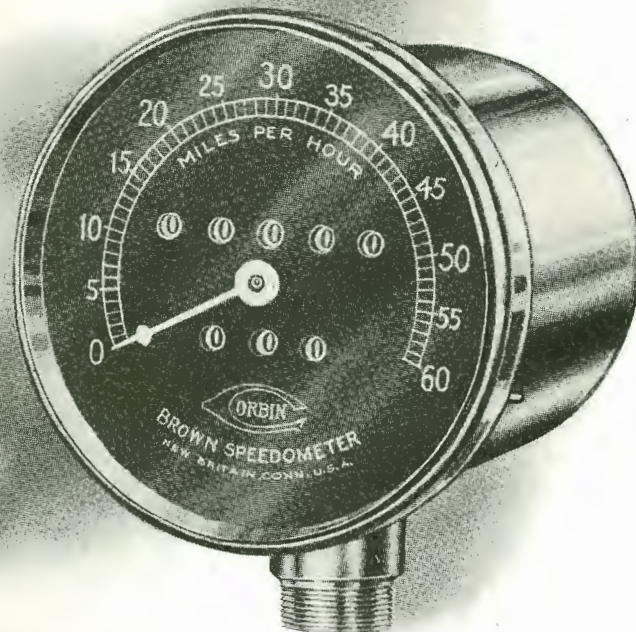
"Model A. M."



Motorcycle Front Drive Parts and Attachments

PART NO.	LIST EACH
Head Only	\$6.00
S-335 Cup Brace Extension40
S-336 Head Bracket Lock Nut20
Gear Section Guide, Bracket Complete	1.00
S-326B Guide Bracket for Indian50
S-330A " " Roll10
S-330B " " Rivets05
S-326C " " Clamp10
S-176C " " Screws05
Gear Bracket Complete	1.00
S-326 Gear Bracket50
S-326A Swivel "30
S-309 Swivel20
S-309A " "20
S-309B " Collar05
S-309D " Spacer05
S-176D " Screw05
S-309C Guide Rod10
Head Bracket Complete50
S-310 Head Bracket25
S-310A " " Clamp10
S-310B " " Screws (2)05
S-310C " " Nuts (2)05
Gear Section Complete 5/8" Cable	1.00
S-93 Gear Section Sleeve20
S-94 " Shaft20
S-105B Small Gear 18-tooth20
S-94B " Pin10
S-83 Gear Section Sleeve Bushing20
S-100 " " Bevel Gear20
S-91 " " Threaded Sleeve20
S-128 " " Driving Shaft10
Large Split Gear Complete	1.00
S-223 Large Gear 64-tooth	1.00
S-224 " " Clamp15
S-225 " " Screws05
Spoke Clamps, Nuts and Screws, 9 Each, Per Set25
S-206 Spoke Clamps20
S-207 " " Screws05
S-208 " " Nuts05
Complete Front Drive Cable	each 2.50
S-127 Steel Links for Shaft 5/8"10
S-127A " Wire Links for Shaft 5/8"10
S-129 Spring Link Outside Sleeve20
S-124 " " Plunger05
S-125 " " Pin05
S-159 " " Spring05

For Automobiles



Model B—4 inch Dial

Price \$30.00

We can furnish a similar instrument calibrated with 30-mile dial for trucks and delivery wagons, also with maximum hand locked, if desired.

Finished in Polished Brass, Nickel Plated or Black and Nickel.

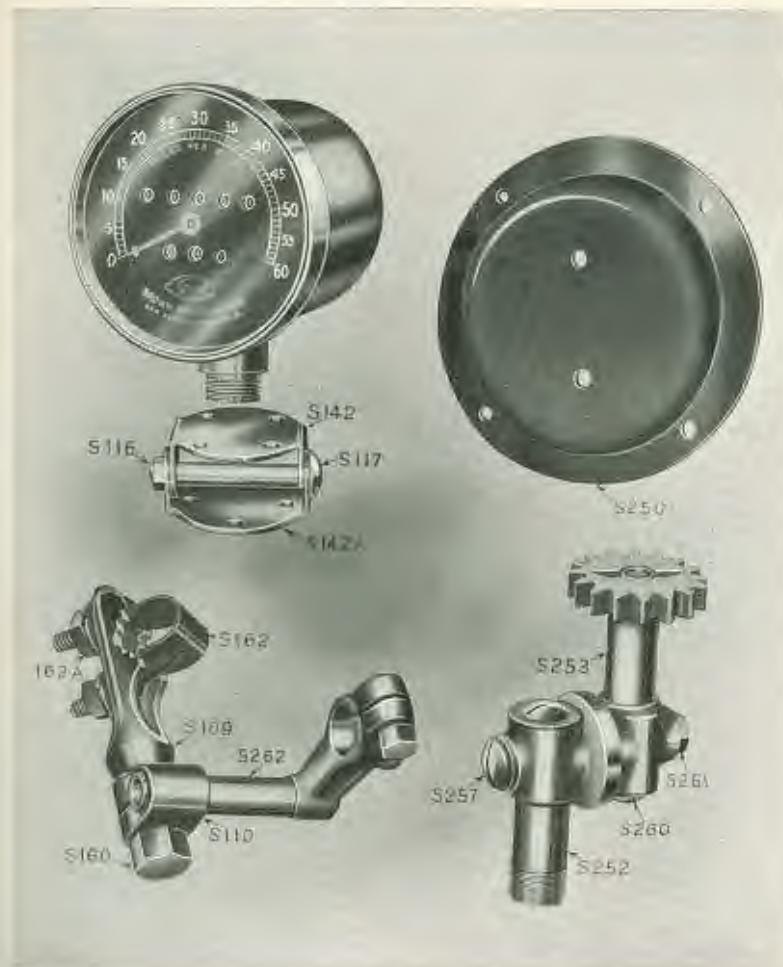
Automobile Model AA



Model AA—Plain
Price \$25.00

Model AA—Flush Mount
Price \$30.00

Automobile Attachments



Automobile Parts and Attachments

DESCRIPTION	PART NO.	EACH	
Swivel Joint (With small gear).....	S83, 84, 86, 91, 93, 93½, 94, 94B, 95, 96, 100, 100A, 102B, 115, 128, 151, 152, 153, 154, 155, 156	\$2.50	
Grease Cup Stud	S15125	
Grease Cup Cap.....	S15620	
Flexible Shaft Complete	S85, 87, 92, 97, 98, 99, (Without leather covering).....	124, 125, 127, 127A, 129, 158, 158½, 159, 219, 248, 249	5.00
Flexible Shaft Casing Complete.....	S85, 87, 92, 97, 98, 99, (Without leather covering).....	248, 249	3.00
Extra Length Flexible Shaft Casing.	S85, 87, 92, 97, 98, 99, Casing over 72" long.....	248, 24935 foot net
Lower End Clutch of Chain	S219 or 23015	
Spring Link and Upper End Clutch of Chain	S124, 124A, 125, 129, 159,	.25	
Road Wheel Gear Complete with Washers and Screws		1.00	
Bushings and Screws For use on Road Wheel (set of 4).....		.15	
Small Gear Steel or Fibre25	
Steering Arm Attaching Bracket	S109, 110, 160, 162, 162A, 162B, 111, 111A, 161 ..	1.35	
Attaching Bracket Angle Section....	111, 111A, 16175	
Attaching Bracket Clamp	109, 110, 16060	
Attaching Bracket Axle Clip	162, 162A, 162B15	
Rubber Bushing15	
Foot Board Collar	S20015	
Strap or Hanger for Flexible Shaft.....		.25	
Flexible Shaft Chain	127, 127A25 foot net	
Flexible Shaft Ferrule and Union..	99, 8725	

Speedometer Automobile Parts

	LIST EACH
Angle Dash Bracket	\$0.50
Adjustable Dash Bracket	1.00
Glass, Ring and Bezel50
New Swivel Gear Section	2.50
New Gear Section Angle Bracket75

See Opposite Page for Old Style Parts.

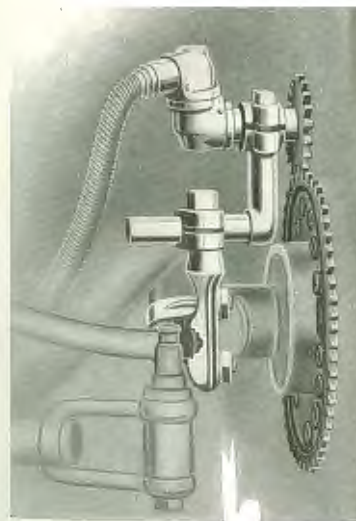


Table showing Gears Required for Different Size Tires

Size	No. teeth on Small Gear	No. teeth on Large Gear
28" Diam.	18	64
30" "	17	64
31" "	18	70
32" "	16	64
33" "	17	70
34" "	15	64
35" "	16	70
36" "	14	64
37" "	15	70
38" "	18	85
40" "	16	85

Showing Strong Construction of Links Cable



$\frac{5}{8}$ Inch
Diam.
Shaft

It is an unquestioned fact that the construction of the flexible shafting is responsible for much of the inaccuracy and unreliability of speedometers in general.

Too much friction in the casing results—or friction is minimized at the cost of durability.

The Corbin-Brown flexible shafting overcomes these faults. It consists of a succession of eye-links and solid links, as shown.

The solid link gives a smooth bearing, thus minimizing friction and insuring smooth running.

The strength of these links makes breaking almost impossible. If perchance one should break, the replacing with a new link is so simple a matter that anyone can do it.

Guarantee

The Corbin-Brown Speedometer is guaranteed for twelve months from date of sale. We will replace any defective parts due to mechanical defects or workmanship, if returned prepaid to our factory subject to our inspection.



$\frac{1}{2}$ Inch
Diam.
Shaft

Corbin-Brown Speedometer Service Stations

Atlanta, Ga.	39-43 State St.	Alexander Seewald Co.
Albany, N. Y.	201 South Main St.	Albany Hdw. & Iron Co.
Akron, O.	1805 Fourth Ave.	Motor Supply & Tire Co.
Birmingham, Ala.	304 W. Baltimore St.	Robert Stubbs
Baltimore, Md.	1231 Main St.	Howard A. French
Buffalo, N. Y.		Ralph E. Becker
Brockton, Mass.		Brockton Sporting Goods Co.
Columbus, O.	128 Gay St.	Motor Supply & Tire Co.
Columbus, O.	138 E. Gay St.	Justin & Parker
Chicago, Ill.	335 Wells St.	Corbin Screw Division
Cleveland, O.	2819 Prospect St.	Penn. Rubber & Supply Co.
Cleveland, O.	1849 Euclid Ave.	Motor Supply & Tire Co.
Cleveland, O.	6307 Woodland Ave.	Louis J. Mueller
Cincinnati, O.	912 Race St.	Motor Supply & Tire Co.
Cincinnati, O.	432 Main St.	Herman Bumiller Co.
Duluth, Minn.	1416 W. Superior St.	Lake Hardware Co.
Dallas, Tex.	1419 Commerce St.	Hans Johnson
Des Moines, Ia.	1111 Locust St.	Central Auto Supply Co.
Detroit, Mich.	112 Woodward Ave.	T. B. Rayl Co.
Detroit, Mich.	967 Woodward Ave.	Elmer W. Brown & Co.
Denver, Colo.	1378 Broadway	Walter W. Whiting
Dayton, O.	210 Keowee St.	Corbin Screw Division
Grand Rapids, Mich.	204 Monroe Ave.	W. B. Jarvis & Co.
Indianapolis, Ind.	232 N. Illinois St.	J. H. Kinney Co.
Kansas City, Mo.	1519 Magee St.	Saufley Supply Co.
Kansas City, Mo.	1421 Grand Ave.	C. Hanson
Los Angeles, Cal.	923 So. Main St.	Los Angeles Ignition Works
Louisville, Ky.	405 W. Broadway	Century Cycle Co.
Minneapolis, Minn.	116 Sixth St.	E. A. Williams & Co.
Milwaukee, Wis.	209 Third St.	Ehlert Hardware Co.
New York City.	63rd & Broadway	Corbin-Brown
New York City.	94-98 Lafayette St.	Corbin Screw Division.
Omaha, Neb.	13th & Harney St.	Baum Iron Co.
Philadelphia, Pa.	8th & Arch Sts.	P. & F. Corbin
Portland, Ore.	7th & Oak Sts.	Ballou & Wright
Portland, Ore.		Northwest Auto Co.
Rochester N. Y.	208 South Ave.	S. B. Roby & Co.
St. Louis, Mo.	3414 Lindell Ave.	Vehicle Top & Supply Co.
St. Paul, Minn.	153 West 5th St.	C. J. Smith & Co.
Salt Lake City, Utah		Bicycle Supply Co.
San Antonio, Tex.	220 E. Commerce St.	R. H. Hofheinz
San Francisco, Cal.	140 Van Ness Ave.	C. A. Bremer
Spokane, Wash.	215 Post St.	Spokane Cycle & Supply Co.
Toledo, O.	231 Superior St.	Union Supply Co.
Utica, N. Y.	115 Columbia St.	Utica Cycle Co.
Washington, D. C.	Cor. 11th & G. Sts.	Barber & Ross