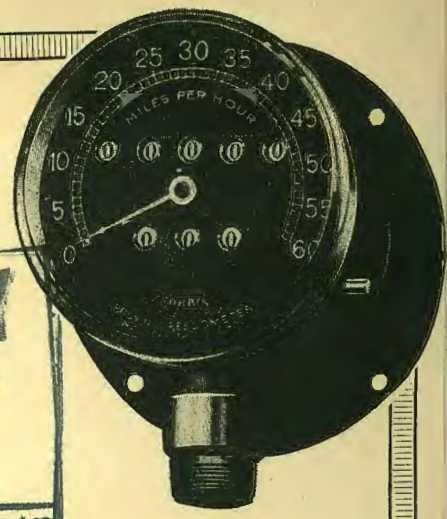


A Greater Demand Than Ever For The
FORD SPECIAL

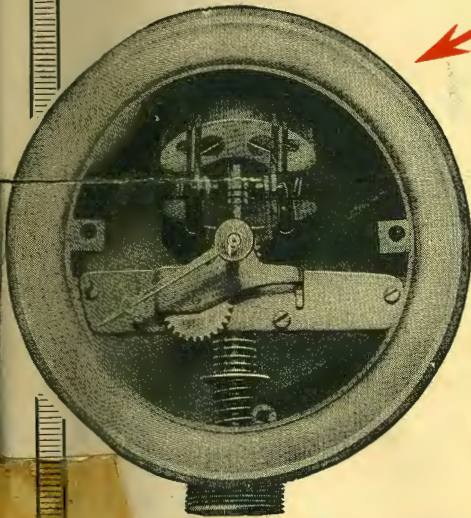
GORBIN BROWN Speedometer



THE Dollars and Cents value involved in the purchase of a Speedometer is of little consequence compared with the essential feature, accuracy. A small saving in dollars and cents value is soon forgotten unless backed up by quality. The Corbin name is your guarantee of quality and accuracy. The name costs you nothing but is your insurance against dissatisfied customers.

The HEAD Mechanism CODE BOX

Price \$12.00



The Corbin-Brown Head is built on the centrifugal principle of physics.

This means that it is absolutely accurate at all times, because science has proved that a mechanism built on the centrifugal principle is not affected by changes in temperature or by electrical influence. As a result the Corbin-Brown is just as accurate whether the thermometer registers high or low.

The fact that the Corbin-Brown is not affected by electrical influence means much to the owner of an automobile equipped with an electric lighting system, electric self-starter, etc., because the resultant increased electrical influence does not affect its accuracy.

The Corbin-Brown is extremely simple in mechanism. It has compound governors which make it particularly sensitive and it will record accurately as low as two miles per hour. These compound governors absorb all the shock to which a car is subjected and, should it be driven over ruts or railroad ties, the indicating hand remains absolutely steady and does not wobble, no matter how severe a jolt the car may receive. The indicating hand of the Corbin-Brown Speedometer is pivoted in the center. It allows practically three-fourths of the circumference for the calibration, thereby permitting absolutely easy reading.

The trip-odometer is below indicating hand and its reading is at no time interfered with while car is in motion.

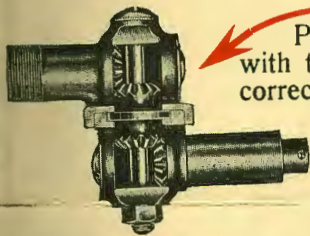
The CABLE

The construction of the flexible shaft is responsible for much of the inaccuracy of speedometers. The Corbin-Brown shafting is constructed of a succession of dumb bells and links. The dumb bells give a smooth bearing. The strength of the links makes breaking almost impossible. If a link does break by accident, a new link can be put in so simply that anyone can do it.



The SWIVEL GEAR SECTION

Please note the large gears giving plenty of power. The gears are made in one piece with the shaft, to which the cables are attached, and are hardened. The gears are held in correct location by a big, strong collar, insuring exact meshing. All the bearing surfaces are exceptionally large and the entire mechanism is assembled in such a way as to be protected against dust and dirt entering. The gear section has a large capacity for grease and, being filled when assembled, will need no attention for a long time.



The ATTACHING BRACKET

The speedometer's attaching bracket, though firm and rigid, can be easily adjusted to four positions by merely removing two set screws. Thus is the driver enabled to obtain exactly the angle most convenient to his range of vision.

The Corbin Screw Corporation, New Britain, Conn., U.S.A.

The American Hardware Corporation, Successor

Philadelphia

New York

Chicago

Read
 What Others
 Say!

Corbin Screw Corp.,
 New Britain, Conn.
 Gentlemen:—

Your speedometer, which was attached to my Indian Motorcycle, was one of the factors which aided me in crossing 1027 miles of hot, sandy desert, insuring me against losing my trail; ticking off the mileage and speed. In climbing the mountains where I passed thru 3' of snow, fording streams, and over muddy, rough roads, I found it telling me the tale of how I was diminishing the distance I had to go, and how fast I was accomplishing my task.

I cheerfully recommend it, especially to the man who desires to beat my record of 11 days, 12 hours, and 10 minutes.

Very truly yours,
 E. G. BAKER

Corbin Screw Corporation,
 New Britain,
 Connecticut.
 Gentlemen:—

Your Speedometer, which was attached to my Harley-Davidson Motor Cycle and side car, was a large factor in making my tour of 3,201 miles, a pleasure in climbing the mountains of western Pennsylvania and in the deep sands of Indiana. I found that my Corbin-Brown was accurate in all these road conditions, and in all weather conditions for strength, accuracy and durability. I cheerfully recommend it to all who desire a speedometer of absolute accuracy.

Very truly yours,
 GEO. W. O'MALLEY, Jr.
 3824 Haverford Avenue.

Corbin Screw Corp.,
 New Britain, Conn.
 Gentlemen:—

Ford Motor Co. are not going to furnish speedometers for 1916. We have handled some of your instruments and have been very much pleased with same. What is the very best price you can give me in dozen lots or more of these instruments and will you give me exclusive sale of same in Beaver County? I have the Agency for the Ford Cars in Beaver County. We delivered one hundred ninety Fords last year and expect to sell three hundred next year.

Do your very best in this and send me at once by freight, twelve of these Speedometers, and oblige,

Yours very truly,
 J. H. GRANDJEY.