

# ORBIN-BROWN SPEEDOMETER

WESTERN FACTORY: DAYTON, OHIO

## DISTRIBUTORS

CORBIN SCREW CORPORATION DIVISION  
(American Hardware Corporation of New York)  
96 Lafayette Street, New York City

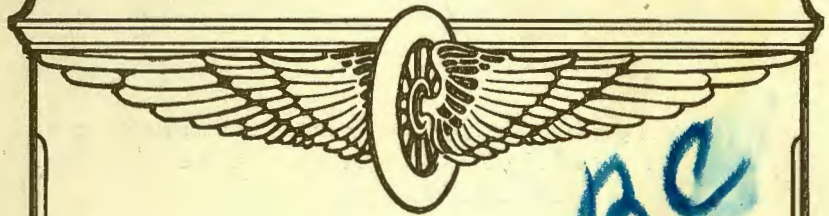
P. & F. CORBIN of Philadelphia  
N. W. Cor. 8th and Arch Streets

THE CORBIN SCREW CORP. of Chicago  
65-67 West Lake Street

## SUPPLY STATIONS

NEW YORK CITY	- - -	97 to 103 Reade Street
NEW YORK CITY	- - -	924 Eighth Avenue
NEW YORK CITY	- - -	2782 Broadway
BROOKLYN, N. Y.	- - -	1421 Bedford Avenue
BUFFALO, N. Y.	- - -	824 Main Street
ALBANY, N. Y.	- - -	135 Central Avenue
ALBANY, N. Y.	- - -	61 Central Avenue
BOSTON, MASS.	- - -	202-204 Columbus Avenue
BOSTON, MASS.	- - -	223 Columbus Avenue
WORCESTER, MASS.	- - -	12-14 Mechanic Street
SPRINGFIELD, MASS.	- - -	270 Worthington Street
SPRINGFIELD, MASS.	- - -	Bridge and Dwight Street
HARTFORD, CONN.	- - -	274 Trumbull Street
HARTFORD, CONN.	- - -	175 Asylum Street
HARTFORD, CONN.	- - -	112 Allyn Street
NEW HAVEN, CONN.	- - -	1085 Chapel Street
BRIDGEPORT, CONN.	- - -	278 Fairfield Avenue
PROVIDENCE, R. I.	- - -	174 Washington Street
DETROIT, MICH.	- - -	227-229 Jefferson Avenue
CLEVELAND, OHIO	- - -	1829 Euclid Avenue
PHILADELPHIA, Pa.	- - -	318 North Broad Street
ATLANTA, GA.	- - -	66 Edgewood Avenue
NEW ORLEANS, LA.	- - -	601-603 Baronne Street
NEWARK, N. J.	- - -	274 Halsey Street

# ORBIN-BROWN SPEEDOMETER



H. CUNTZ  
PALACE-NY-1913

FILE COPY

PATENT LIBRARY  
AMA - DETROIT

1913

YEAR


CODE

BOX



# ORBIN-BROWN

## SPEEDOMETER

 IN purchasing a Speedometer or speed recorder for your automobile, the first and most essential consideration should be accuracy.

When your speed indicator says that you are going twenty miles an hour, it is important that this is the rate of speed at which you are traveling—and no more. You should not think that you are traveling twenty, thirty or forty miles an hour—you should be sure.

A competent chauffeur can guess at speed and strike it as accurately as a poorly constructed Speedometer.

The Corbin-Brown Speedometer is simple in construction, yet more sensitive to speed variations than any other. The principle of the governor in this instrument makes it possible to register a *low* mileage. In some speedometers the indicator hand shows practically no action until a speed of from eight to ten miles is attained.

When you buy a watch you want it to indicate seconds and minutes as well as hours. The same idea holds true in the purchase of a Speedometer. It should indicate accurately all speed, whether it be low or high mileage.

The Corbin-Brown Speedometer is the one that will do this.

Every Corbin-Brown Speedometer sent out is carefully tested and proven to be accurate under all climatic conditions. It is constructed on the "centrifugal" principle of physics and is therefore not subject to the marked fluctuations and inaccuracies due to climatic changes which characterize speed indicators of a "magnetic" type.

The Bureau of Standards of the United States government has made exhaustive tests of the "magnetic" type of Speedometer and has proved that such instruments show a variance during hot and cold weather of over 20%.

When buying a Speedometer bear this fact in mind:—

The Corbin-Brown Speedometer is built on the centrifugal principle. Therefore, temperature has no appreciable effect on its accuracy. It is equally reliable and true at the zero of Christmas as during the torridity of July.



The Corbin-Brown Speedometer will prove up to every representation made for it. It records speed accurately; its hand is steady; its odometer is absolutely dependable.

The Corbin-Brown Speedometer has compound governors which make it doubly sensitive to the speed of the wheel.

It records accurately from low mileage to high.

The dial is of a white or a rich, brown color, with figures, calibration and indicator in brown or white at the purchaser's option. The Corbin-Brown Speedometer can be read from the rear seat equally as well as from the front seat.

The indicator is pivoted at the center of the dial and therefore does not obstruct at any time a clear view of all the figures on the trip odometer. This is a feature that every automobilist can thoroughly appreciate.



The indicator is so adjusted that there is no "wobbling" or oscillation of the hand when the automobile hits the rough spots. The indicator remains absolutely steady.

Every Corbin-Brown Speedometer is calibrated by hand and tested to absolute accuracy before being sent out. There is no guesswork about it.

It is made of specially hardened steel, and brass; there are no "die-cast" parts and it is built with the precision of a high-grade watch. The cable is made of hardened steel and is of the best possible construction.

The odometer is so built that it cannot jump and always indicates correct mileage. It records a total of 100,000 miles. Many odometers on the market record a total of only 10,000 miles, which makes it difficult to keep an accurate record of the complete mileage the machine has accomplished.

## The Corbin Screw Corporation Division

(The American Hardware Corporation)

**New Britain, Conn., U. S. A.**

### DISTRIBUTORS

CORBIN SCREW CORPORATION DIVISION,

(The American Hardware Corporation of New York)

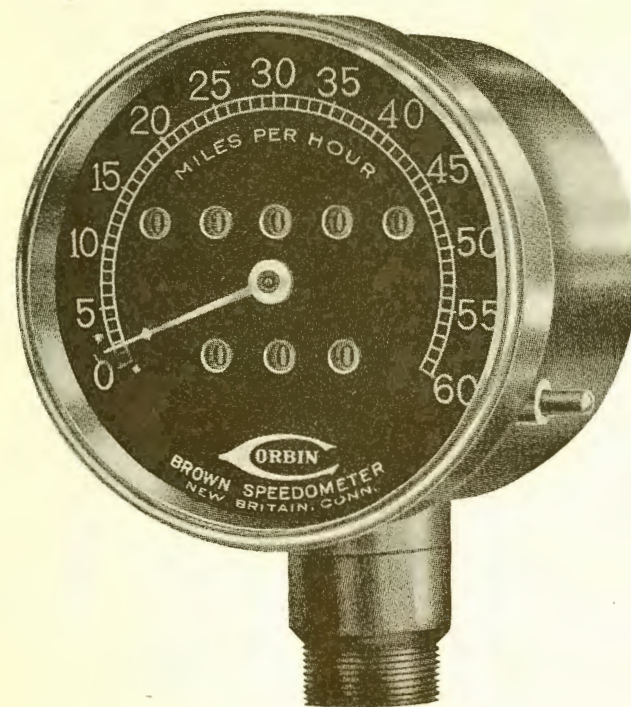
96 Lafayette Street, New York City

P. & F. CORBIN of Philadelphia

N. W. Cor. 8th and Arch Streets

THE CORBIN SCREW CORP. of Chicago

65-67 West Lake Street

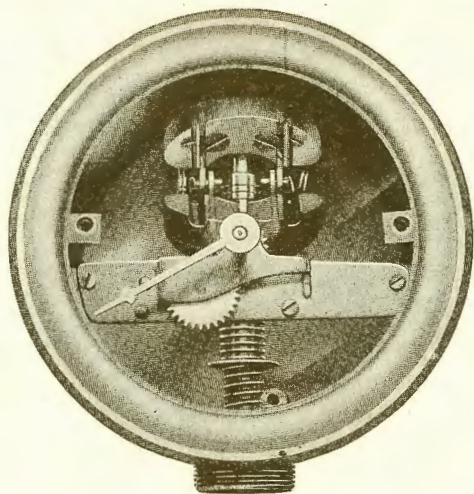


MODEL A-3 3 INCH DIAL

PRICE \$25.00

### GUARANTEE

The Corbin-Brown Speedometer is guaranteed for twelve months from date of sale. We will replace any defective parts due to mechanical defects or workmanship, if returned prepaid to our factory subject to our inspection.



SHOWING SIMPLICITY OF  
**ORBIN-BROWN MECHANISM**

Simplicity spells efficiency.

Note the absence of complicated mechanism.

In the Corbin-Brown Speedometer, the parts are few and strong insuring durability.

Its centrifugal governor has four balance weights so sensitive that they respond to the slightest increase in speed.

This centrifugal principle of the Corbin-Brown Speedometer is the same as that applied to the regulation of engines. It insures absolute regularity of revolution.

Any Corbin-Brown Speedometer may be connected with either left or right wheel.

PRICE LIST.

Model A.

3 inch Dial, Season Odometer, Polished Brass, 60 mile.....	\$25.00
With 3 inch Dial Chelsea Clock.....	65.00

Model B.

4 inch Dial, Season Odometer, Polished Brass, Trip Odometer, 60 mile.....	\$30.00
With 4 inch Dial Chelsea Clock.....	70.00

Model C.

4 inch Dial, Season Odometer, Polished Brass Trip Odometer, Maximum Hand, 60 mile.....	\$35.00
With 4 inch Dial Chelsea Clock.....	75.00

Model D.

4 inch Dial, Season Odometer, Polished Brass, Trip Odometer, Maximum Hand, Electric Light, 60 mile.....	\$40.00
With 4 inch Dial Chelsea Clock.....	80.00

Model E.

4 inch Dial, Season Odometer, Polished Brass, Trip Odometer, 80 mile.....	\$50.00
With 4 inch Dial Chelsea Clock.....	90.00

Model F.

4 inch Dial, Season Odometer, Polished Brass Trip Odometer, Maximum Hand, 80 mile.....	\$55.00
With 4 inch Dial Chelsea Clock.....	95.00

Model G.

4 inch Dial, Season Odometer, Polished Brass, Trip Odometer, Maximum Hand, Electric Light, 80 mile.....	\$60.00
With 4 inch Dial Chelsea Clock.....	100.00

Model H.

4 inch Dial, Season Odometer, Polished Brass, Trip Odometer, Maximum Hand, Electric Light, 100 mile.....	\$80.00
With 4 inch Dial Chelsea Clock.....	120.00

Note: For nickel plated finish, extra \$2.00.

In ordering be sure to state the size of wheels and tires (front wheels) and length of cable required.